

ApeosPort-IV

C7780

C6680

C5580

FUJI XEROX 

ApeosPort-IV C7780 / C6680 / C5580 Digital Colour Multifunction Device

Exceptionally efficient. Extra secure.
Extremely easy.



Productive, easier to use and secure

The ApeosPort-IV C7780 / C6680 / C5580 multifunction devices thrive in document-intensive office environments where the workloads are demanding, security's a must, and ease-of-use and ease-of-management truly matter.

The ApeosPort-IV C7780 / C6680 / C5580 series features an open architecture technology that enables personalised and customised document management solutions you can access right from the device's touch screen. These applications can leverage your existing infrastructure and databases, and meet your specific business challenges.



Performance to increase productivity

- **Up to 75 ppm copy and print speeds.** Enhance office productivity with full colour at a speedy 70 ppm.
- **Fast scanning** up to 100 ppm (duplex scanning: 200 ipm). Your department can swiftly scan, retrieve, electronically store and distribute documents.
- **Exceptional media flexibility.** Supporting a wider range of media types and weight from more trays than most devices in its class. It supports up to 300 gsm and media sizes up to SRA3.
- **Multiple users can simultaneously perform different tasks at the device** – scan, copy, print, transmit faxes and manage the queue – a helpful feature in maximising business efficiency.
- **A wide range of finishing options are available.** Short production runs can be efficiently handled in-house, saving time and money.

Convenient, walk-up operation

Large 10.4-inch, colour user interface features bright, intuitive icons and easy access to all major functions directly from the home screen.

For easy document viewing, colour thumbnails and up-close previews can be shown on the device touch screen.

The entire panel can be tilted making it accessible to just about anyone.

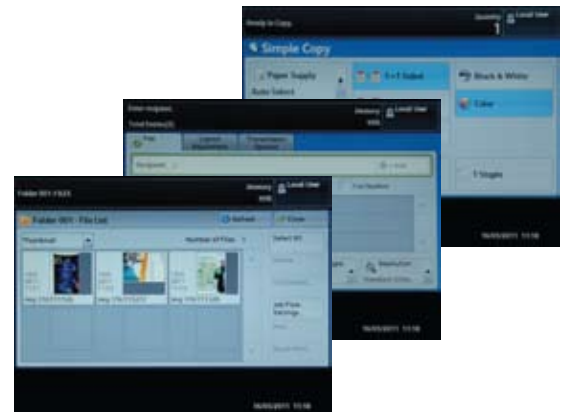
Take colour to a whole new level

The ApeosPort-IV C7780 / C6680 / C5580 series with advanced VCSEL technology, helps you create professional-looking documents at the touch of a button.

High-resolution output, highly impactful documents. With 2400 x 2400 dpi, photo-quality colour images and rich, crisp text, your output always makes a huge impact.

Always accurate image quality. The ApeosPort-IV C7780 / C6680 / C5580 series employ advanced print heads with Digital Image Registration Control Technology, which ensures consistently outstanding image registration.

Impressive results. Print brilliant, attention-grabbing images on a variety of stock as large as SRA3 and on paper weights up to 300 gsm, and take advantage of impressive finishing capabilities from saddle-stitch booklets to folded brochures.



Build your solution today and expand it tomorrow as your business grows

Flexible document handling.

The 250-sheet capacity, single pass duplex document feeder allows both sides of a document to be scanned simultaneously at up to an incredible 200 images per minute for exceptional productivity.



Feeding options. Add on as your productivity and media handling needs increase.

The 2,000 sheet **A4 High Capacity Feeder** is perfect for long run reports, presentations or mailers.

The **Oversized High Capacity Feeder** supports up to 300 gsm stock and enables SRA3 full bleed applications.



Professional finishing options.

Create professional presentations and attractive manuals or proposals. The range of optional finishers gives you efficient, print-on-demand versatility. These high performance finishers feature automatic stapling, hole-punching, folding and booklet making.

Environmentally sound

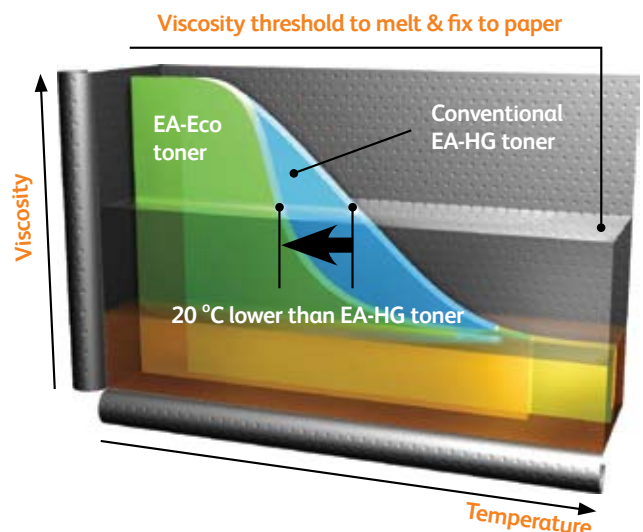
The ApeosPort-IV C7780 / C6680 / C5580 series delivers cutting-edge reductions in energy consumption.

Low energy consumption. The ApeosPort-IV C7780 / C6680 / C5580 series consumes less power in standby, low power and operating modes, resulting in greater energy savings in the office.

Cutting-edge technology

Smart Energy Management Technology. Our innovative new Smart Energy Management Technology better manages energy usage by only using what is necessary, when it's necessary. With this new technology, these devices recover from sleep mode in just 2 seconds. It's all about using energy only when it's needed – but retaining convenience too.

EA-Eco Toner. This Emulsion Aggregation (EA) Ultra Low-Melt toner achieves a fusing temperature more than 20°C lower than conventional EA toner, reducing power consumption during fusion, as well as achieving a brilliant glossy output even on ordinary paper.



Power LED Scanner. The LED technology used as the light source for image scanning consumes less energy and gives you ultra-quiet operation. Since the LED lamps light up immediately, the first copy out time has been reduced to less than 7 seconds.

Scale up your productivity.

Work faster and more efficiently with powerful performance and convenience features that simplify document management.

Get fast results. Experience high output performance with print speeds up to 70 ppm in colour and up to 75 ppm in black and white, with a first-page-out-time as fast as 4.1 seconds.

Maximise uptime. Generous, scalable paper handling options support media capacities up to 5,260 sheets in a wide variety of media sizes, types and weights.

User intervention is kept to a minimum. Two black toner cartridges means toner lasts longer and can be replaced on the fly.

Full range of scanning solutions. Simply scan your hard copy documents and get searchable digital files* that can be automatically shared via email or network folder, or stored on the device or any USB memory device for true portability.

*Optional Searchable PDF Kit is required

With LDAP integration standard. Secure authentication, administration and access to your corporate directory is simplified.

Reduce network traffic. Access scanned documents faster with advanced file compression techniques that dramatically shrink file sizes, reduce storage space requirements and cut down on document traffic on your network*.

*Optional High Compression Image kit is required

Configure once, apply fleet wide. Fuji Xerox multifunction device configurations can be cloned and distributed to all similar multifunction devices on your network, eliminating the need to configure and manage each device individually.

Integrates easily with 3rd-party workflow applications to extend and fine-tune capabilities such as accounting and document management.

Walk-up simplicity. Print from and scan to any USB memory device for faster document delivery when you're not at your computer*.



*Optional Scan to USB Kit and/or USB Media Print Kit is required

Store frequently printed documents. Increase employee efficiency with robust scanning features that store frequently used forms and documents in the device's hard drive for subsequent reprinting.



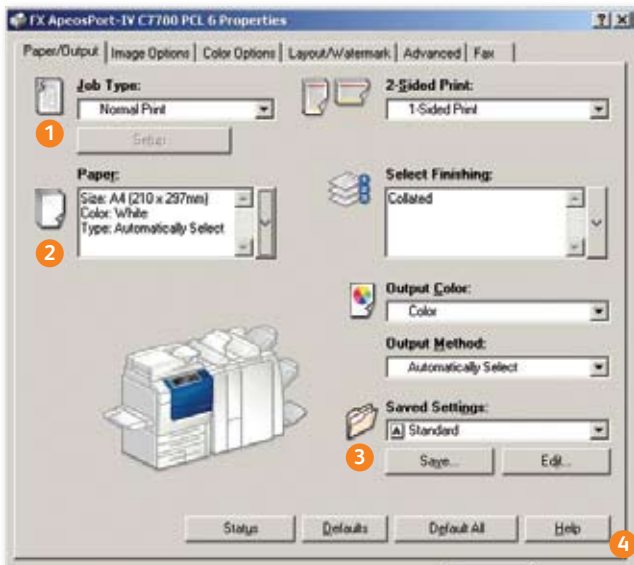
Scan to Home. As easy as copying, documents can be scanned directly to a pre-designated folder on a registered PC for immediate use or archived for later retrieval*.

*External authentication is required.

To speed up copying and faxing an express (simple) copy and fax feature is available that displays only the basic settings. This is provided in addition to the normal features.

Reduce costs by printing multiple pages per sheet (N-Up) which is especially useful when printing Microsoft PowerPoint presentations, MS Word documents, PDFs — and even web pages.

WHQL certified PCL and PostScript print drivers provide a consistent, easy-to-use interface for end-users that can greatly simplify your printing operations.



- 1 Drop down menu for secure print, fax, save to mailbox and more
- 2 Paper selection summary window
- 3 Favourite print settings
- 4 Help function for feature descriptions and driver assistance

Single print driver works with all printers. The Xerox Global Print Driver® supports Fuji Xerox and non-Xerox devices on the network. Never have to redeploy another print driver, saving hours of downtime.

Bi-Directional status. Fuji Xerox print drivers integrate powerful bi-directional tools that offer real-time status and automatically detect and install new device options such as paper trays and finishers.

Customise your print driver settings for economy and efficiency. For example, set two-sided printing or choose N-up for printing multiple pages on a single sheet as your default.

Save time by storing the settings of frequently printed documents as favourites in your print driver. Settings include paper sizes, covers, duplexing, finishing and more.

Advanced, paperless faxing. Your users can send and receive faxes without leaving their desks. LAN fax sends faxes directly from applications on your desktop. Plus, fax-forwarding lets you forward incoming faxes to an email address, folder or network connected PC for retrieval and further distribution on demand.

Incoming faxes reported by e-mail. For a paperless fax option, fax jobs can be reported to five pre-registered users when the document is stored in the mailbox.

Block unwanted (junk) fax numbers. This allows you to block specified fax numbers, so it does not print faxes received from those numbers in the future.

Colour: in-house and under control

Add the impact of colour and take advantage of tools that let you choose when, where and how much colour your business needs.

The printing world is exploding with new applications and new ways to use colour, media and finishing. The superb image quality, robust media latitude, and flexible finishing options of the ApeosPort-IV C7780 / C6680 / C5580 series, make it the perfect device for capturing new business and keeping more applications in-house.

Nothing gets noticed like colour. 2,400 x 2,400 dpi output resolution with 256 halftones gives your documents unmatched clarity and impact.

EA-Eco toner delivers a professional glossy finish on documents where impact is the key.

You only pay for colour on pages that use colour. The built-in image sensing technology automatically recognises when colour is used and will capture this information.

Regulate access to colour to control costs. Allocate colour-page limits by user, department, etc.

Built-in reporting functions let you track all services — print, copy, scan, fax and email, as well as colour printing and copying – making usage decisions easier in the future.



Security at all points

How much would it cost your business if the security of critical, sensitive information became compromised? Are you at risk?



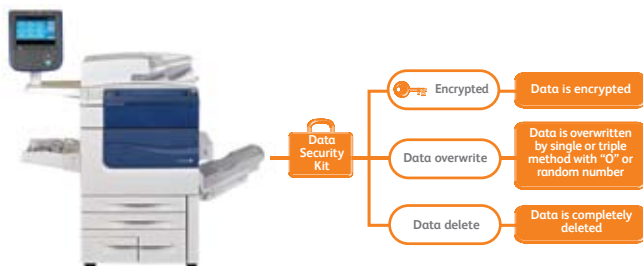
Safeguard your information

The ApeosPort-IV C7780 / C6680 / C5580 multifunction devices incorporate some of the strongest security features in the industry, ensuring that your document production workflow, often overlooked in security checks, is well-protected.

Secure print helps keep documents private by holding print jobs in the queue until the user enters the password.

Password protected PDFs require a password to open and view a sensitive scan.

Data Security Kit provides the following security features:



Network Authentication restricts access to device features and management settings by validating user names and passwords.

IEEE 802.1X protocol helps ensure devices connected to the network are properly authenticated.



IPv6 support opens up additional IP addressing opportunities across the Internet and inside enterprise firewalls. IPv6 provides additional network security, better network routing and configuration, and improved support for high volume printing and larger print jobs.

Easily manage Fuji Xerox devices

Proactively manage printing fleets and control colour usage and costs with Fuji Xerox management tools.

CentreWare™ Internet Services software makes it easy for administrators to configure the device, upload address books, monitor usage and consumables remotely and establish auditing capabilities.



Manage colour printing to minimise costs. Control costs by nominating when colour could be used and by whom. This ensures that colour is available to those individuals who truly leverage its power - such as the sales teams and marketing department.

Driverless printing for remote users with CentreWare Internet Services web utility. Any connected computer can immediately output PDF, TIFF and PRN files from any network computer, without using a print driver at all.

Device Setup Tool allows for simplified device configuration and administration, and lets you easily clone configurations to other similar devices on the network.

Fuji Xerox Accounting Solutions

Available as standard features on Fuji Xerox multifunction devices. Use them to monitor not only the document pages your office produces but also who produced them.

Auditrion. Sets limits of device features for analysis and billing purposes.

Xerox Standard Accounting. Provides reports for greater cost control to track and limit the number of copy, print, network scanning, email and fax jobs for each user.

Network Accounting. Ideal for larger enterprises. Provides extensive accounting information level for copies, prints and scans using integrated solutions available from Fuji Xerox.

Key Features

- Set a quota on the number of print, copy, scan and fax jobs that a user can perform. Quotas can be reset remotely at any time
- Account for device activity down to the user, group or departmental level
- Manage a user's access to colour for both copy and print jobs
- Bill usage to internal departments or external clients

Extending your capabilities with Apeos Solutions

The transfer of knowledge, data and communication of information is critical to the efficiency and productivity of business today. The office employee also demands true 'ease of use' to ensure this knowledge is distributed efficiently and securely within the business.

Image Gateway for Apeos is the platform delivering integrated office solutions and provides additional capability to enhance your Enterprise productivity, security, streamline processes and reduce costs. Capabilities include: Cost Recovery, Secure Device Authentication via Card ID, Scanning directly into Enterprise Content Management Systems, Rules & Routing, Secure Fax and Workflow.

Cost Recovery – ACCRU

- Secure Release via Card ID/PIN and Cost Recovery of all Print, Copy, Scan and Fax jobs
- Disburse and control print related costs to users / departments and cost centres
- Enterprise level reporting
- Active Directory authentication and SSL Encryption to ensure security

Scan to and print from EDMS

- Tight integration to supported ECM systems with search capabilities providing process improvements and security
- Consolidation of document storage and retrieval
- Collaboration, create, share and review content
- Streamline resource intensive processes with the ability to preview and retrieve documents via the user interface

Image and data capture

- Support for batch scanning (including blank page recognition)
- Extended output file formats and destinations such as Word, Excel and high compression PDF
- Minimise information leakage through MyFolder and MyEmail

Fax communication

- Access the internal fax server module of or connect to the external RightFax server (including support for FoIP)
- Desktop faxing capability
- Follow me faxing (available with ACCRU)



Specifications of ApeosPort-IV C7780 / C6680 / C5580 Series

Copy Function

	ApeosPort-IV C7780	ApeosPort-IV C6680	ApeosPort-IV C5580
Type	Console type		
Memory	2 GB		
HDD	160 GB (Usable Space: 67 GB)		
Colour Capability	Full Colour		
Scanning Resolution	600 x 600 dpi		
Warm-up Time	90 sec or less (at room temperature 20°C)		
Original Paper Size	Max: 297 x 432 mm (A3, 11 x 17") for both sheet and book originals		
Output Paper Size	Max: SRA3 (320 x 450 mm), 13 x 18" 330.2 x 457.2 mm For Bypass Tray: 13 x 19.2" 330.2 x 488 mm) Min: A5 For Bypass Tray: Postcard (100 x 148 mm) and envelope (120 x 235 mm)		
Output Paper Weight ¹	Tray: 64 - 220 gsm, Bypass Tray: 64 - 300 gsm		
First Copy Output Time	BW: 4.1 sec or less (A4LEF in Black & White preference mode) Colour: 6.5 sec or less (A4LEF in Colour preference mode)		
Continuous Copy Speed (In Simplex and Duplex)	75 ppm <BW> 70 ppm <Colour>	65 ppm <BW> 60 ppm <Colour>	55 ppm <BW> 50 ppm <Colour>
Paper Tray Capacity	Standard: 3,260 sheets Tray 1 & 2: 500 sheets, Tray 3: 870 sheets, Tray 4: 1,140 sheets, Bypass Tray: 250 sheets Optional: High Capacity Feeder: 2,000 sheets Maximum: 5,260 sheets (when optional A4 High Capacity Feeder (HCF2) or Oversized High Capacity Feeder (HCF B1-S) is equipped)		
Output Tray Capacity	500 sheets (Simple Catch Tray)		
Power Supply	AC220-240V±10%, 10A (Single power source), 50/60Hz AC110±10%, 11A+9A (Dual power source), 50/60Hz		
Power Consumption	2.4kW or less (AC220-240) / 2.2kW or less (110V) Sleep Mode: 1.5W or less, Low Power Mode: 104W, Standby Mode: 192W		
Dimensions	W 1,004 x D 804 x H 1,392 mm		
Machine Weight	247 kg		

¹ Performance may vary for heavyweight, coated and special stocks.

Print Function

Type	Built-in type		
Continuous Print Speed (In Simplex and Duplex)	75 ppm <BW> 70 ppm <Colour>	65 ppm <BW> 60 ppm <Colour>	55 ppm <BW> 50 ppm <Colour>
Print Resolution	2,400 x 2,400 dpi		
PDL	Standard: PCL6, PCL5, Optional: Adobe® PostScript® 3TM		
Operating System	Standard: Windows® 2000, Windows® XP, Windows Server® 2003, Windows Server® 2008-86, Windows Vista®, Windows® 7, Windows® XP Professional x64, Windows Server® 2003 x64, Windows Server® 2008 x64, Windows Vista® x64, Windows® 7 x64, Windows Server® 2008 R2 x64, Mac OS 10.5-10.6 Optional: Windows® 2000, Windows® XP, Windows Server® 2003, Windows Server® 2008-86, Windows Vista®, Windows® 7, Windows® XP Professional x64, Windows Server® 2003 x64, Windows Server® 2008 x64, Windows Vista® x64, Windows® 7 x64, Windows Server® 2008 R2 x64, Mac OS 9.2.2, Mac OS x 10.3.9-10.4.11 (except 10.4.7), Mac OS X 10.5-10.6		
Connectivity	Standard: Ethernet 100BASE-TX/10BASE-T, USB2.0 Optional: 1000BASE-T ²		

² When this option is equipped, Ethernet 100BASE-TX/10BASE-T will not be available.

Scan Function

Type	Colour Scanner		
Scanning Speed	BW: 100 ppm, Colour: 100 ppm One-Pass Duplex Scanning: 200 ipm		
Scanning Resolution	600 x 600 dpi, 400 x 400 dpi, 300 x 300 dpi, 200 x 200 dpi		
Connectivity	Ethernet 100BASE-TX/10BASE-T/1000BASE-T (Optional)		
Scan Destinations	Scan to Folder, Scan to PC/Server (using FTP/SMB protocol), Scan to Email, Scan to Home, Scan to USB		

Fax Function (Optional)

Send Document Size	Max: A3, 11 x 17", Long documents (Max: 600 mm)		
Transmission Time	Less than 3 seconds		
Transmission Mode	ITU-T G3		
No. of Fax Lines	PBX, PSTN, Maximum 3 ports G3-3 port		

Duplex Automatic Document Feeder

Capacity	250 sheets		
Original Paper Size	Max: A3, 11 x 17", Min: A5		
Output Paper Weight	38 - 200 gsm (Duplex: 50 - 200gsm)		
Feeding Speed (A4 LEF Simplex)	BW: 80 DPM, Colour: 75 DPM		

Descriptions in this material, product specifications and / or appearances are subject to change without prior notice due to improvements. Please note that the product colour appears differently from the actual colour as a result of properties of papers or printing ink. Windows and Windows NT are registered trademarks of Microsoft Corporation. NetWare is a registered trademark of Novell, Inc. in the United States. Macintosh, Mac OS and Ether Talk are trademarks of Apple Computer, Inc. PostScript is a registered trademark of Adobe Systems Incorporated in each country. HP-GL is a registered trademark of Hewlett-Packard Company. Other company names or product names are registered trademarks or trademarks of each company.

Spares for the standard configuration of installed machines is supported for up to 7 years from the date of the end of machine production.

For more information or detailed product specifications, call or visit us at

Fuji Xerox Australia 101 Waterloo Road,
Macquarie Park NSW 2113
Tel. (02) 9856 5000 Fax. (02) 9856 5003

13 14 12

www.fujixerox.com.au

Advanced Finisher (or Finisher C2 with Booklet Maker)³

	ApeosPort-IV C7780	ApeosPort-IV C6680	ApeosPort-IV C5580
Paper Size / Paper Weight	Output Tray: Max: 13 x 19", 12.6 x 19.2" (320 x 488mm), Min: Postcard (100 x 148mm), 64 to 300 gsm Finisher Tray: Max: 13 x 19", 12.6 x 19.2" (320 x 488 mm), Min: B5 LEF, 64 to 220 gsm Booklet Tray: Max: 13 x 18", Min: A4, Letter (8.5 x 11"), 64 to 220 gsm		
Stacker Capacity	Output Tray: 500 sheets (A4) Finisher Tray: No Stapling: A4: 1,500 sheets, B4 or larger: 1,500 sheets, Mixed Stack: 300 sheets Stapling: A4: 200 copies or 1,500 sheets B4 or larger: 100 copies or 1,500 sheets Booklet Tray: 20 copies		
Staple	50 sheets (Max 90 gsm)		
Capacity	Max: A3, 11 x 17", Min: B5 LEF		
Paper Size	1 position (Front, Rear / Corner), 2 positions (Parallel)		
Position	Punch		
Paper Size	A3, 11 x 17", B4, A4, A4 LEF, Letter (8.5 x 11"), Letter (8.5 x 11") LEF, B5 LEF		
Number of Holes	2 / 4 holes (Option US 2 / 3 holes)		
Paper Weight	64 to 200 gsm		
Booklet Finishing	Capacity: Booklet: 15 sheets, Bi-Fold: 5 sheets		
Capacity	Paper Size: Max: 13 x 18", Min: A4, Letter (8.5 x 11")		
Paper Size	Paper Weight: Booklet: 64 - 220 gsm, Bi-Fold: 64 - 220 gsm		
Paper Weight	Dimensions/Weight W 921 x D 650 x H 1,010 mm, 86 kg		

³ Advanced Finisher (or Finisher C2) without Booklet Maker is also available with stacker capacity up to 3,000 A4 sheets.

Professional Finisher (or Finisher D2 with Booklet Maker)

Paper Size / Paper Weight	Output Tray: Max: 13 x 19", 12.6 x 19.2" (320 x 488 mm), Min: Postcard (100 x 148 mm), 64 to 300 gsm Finisher Tray: Max: 13 x 19", 12.6 x 19.2" (320 x 488 mm), Min: B5LEF, 64 to 300 gsm Booklet Tray: Max: 13 x 18", Min: A4, Letter (8.5 x 11"), 64 to 300 gsm		
Stacker Capacity	Output Tray: 500 sheets (A4) Finisher Tray: No Stapling: A4: 2,000 sheets, B4 or Larger: 1,500 sheets Mixed Stack: 300 sheets Stapling: A4: 200 sets or 2,000 sheets, B4 or Larger: 100 sets or 1,500 sheets Booklet Tray: 20 sets		
Staple	Capacity: 100 sheets (64 - 300 gsm)		
Capacity	Paper Size: Max: A3, 11 x 17" Min: B5 LEF		
Paper Size	Position: Single (Front/Corner, Center/Parallel, Back/Parallel, Corner), Dual (Parallel)		
Position	Punch		
Paper Size	A3, 11 x 17", B4, A4, A4LEF, Letter (8.5 x 11"), Letter (8.5 x 11") LEF, B5LEF		
Number of Holes	2 / 4 holes (Option US 2 / 3 holes)		
Paper Weight	64 to 220 gsm		
Booklet Finishing	Capacity: Booklet: 20 sheets, Bi-Fold: 5 sheets		
Capacity	Paper Size: Max: 13 x 18", Min: A4, Letter (8.5 x 11")		
Paper Size	Paper Weight: Booklet: 64 - 300 gsm, Bi-Fold: 64 - 300 gsm		
Paper Weight	Folding⁴		
Folding⁴	Z-Fold: Paper size: A3, 11 x 17", B4, Paper Weight: 64 - 90 gsm		
Z-Fold	Tri-Fold: Paper size: A4, Letter (8.5 x 11"), Paper Weight: 64 - 90 gsm		
Tri-Fold	Interposer		
Interposer	Capacity: 200 sheets		
Capacity	Paper Size: Max: A3, 11 x 17" Min: B5 LEF		
Paper Size	Paper Weight: 64 - 220 gsm		
Paper Weight	Dimensions / Weight W 1,050 x D 725 x H 1,165mm, 135 kg		
Dimensions / Weight	With D2 Folder Unit: W 1,250 x D 725 x H 1,165mm, 175 kg		

⁴ D2 Folder Unit (Optional) is required.

A4 High Capacity Feeder (HCF2)

Paper Size / Paper Weight	A4 LEF, Letter (8.5 x 11") LEF, B5 LEF, 64 - 220 gsm		
Capacity	2,000 sheets		
Dimensions / Weight	W 389 x D 610 x H 377 mm, 29 kg		

Oversized High Capacity Feeder (HCF B1-S)

Paper Size / Paper Weight	Postcard (100 x 148 mm), B5, B5LEF, 8 x 10" LEF, Letter (8.5 x 11") Letter (8.5 x 11") LEF, A4, A4LEF, 8.5 x 13", Legal (8.5 x 14"), B4, A3, 11 x 17", 12 x 18", 12.6 x 17.7", 12.6 x 19.2", 13 x 18", 13 x 19", 64 to 300 gsm		
Capacity	2,000 sheets		
Dimensions / Weight	W 988 x D 762 x H 992 mm, 160 kg		

Customer Expectation Document (CED)

For detailed product specifications, optimum performance parameters and service clearances refer to the Customer Expectation Document.



Reproduction Prohibitions Please note that reproduction of the following is prohibited by law: Domestic and overseas bank notes and coins, government-issued securities, national bonds and local bond certificates. Unused postage stamps and post cards. Certificate stamps stipulated by law. The reproduction of works for copyright purposes (literary works, musical works, paintings, engravings, maps, cinematographic works, photographic works, etc.) is prohibited except when they are reproduced personally, at home or within limited range according to the above. This product is equipped with an anti-counterfeit feature. This feature is not intended to prevent illegal reproduction. Be extremely careful about the management of equipment used.



For Your Safe Use

Before using the product, read the Instruction Manual carefully for proper use. Use the product with an appropriate adequate power source and voltage displayed. Be sure to establish a ground. In the case of a failure or short circuit, an electric shock may result.

