

ColorQube 8870

Optimise your printing costs.

The ColorQube 8870 offers an extremely low cost of ownership for workgroups in large businesses which engage in high-volume printing. It is also a powerful, easy to use and waste-conscious printing solution that consistently delivers exceptional colour quality.



Amazing Print Quality and Productivity

- Fast print speed of up to 40 ppm for both colour and monochrome. First-page-out time of less than 5 seconds for improved efficiency.
- Rich and saturated colours independent of paper type and quality.
- Superb resolution achieved with 2,400 FinePoint™, while PANTONE Colour approved solid colour simulations provide accurate colour output.
- As solid ink is far less dependent on the paper's surface, highly consistent levels of colour quality across the broadest range of media types can be achieved.
- *Color by Words* is a breakthrough colour-matching technology to achieve better colour accuracy. Users can select from a unique menu of words, such as "red apple," "blue sky" or "green grass" to fine tune the colours they desire.

Take a closer look...



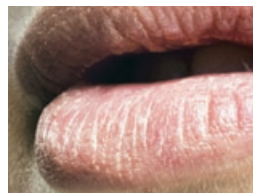
Exceptional colour

Solid ink provides the most vibrant colours, rich and saturated for lifelike results.



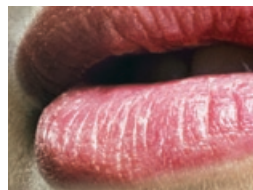
Consistency

With solid ink, you get the same great results, print after colourful print.



Unique colour control

Original photo not right? With the *Color by Words* feature there is no need to go back to square one and manipulate source files. Use the *Color by Words* drop-down list and choose "pink colours a lot more pink" for picture-perfect results.



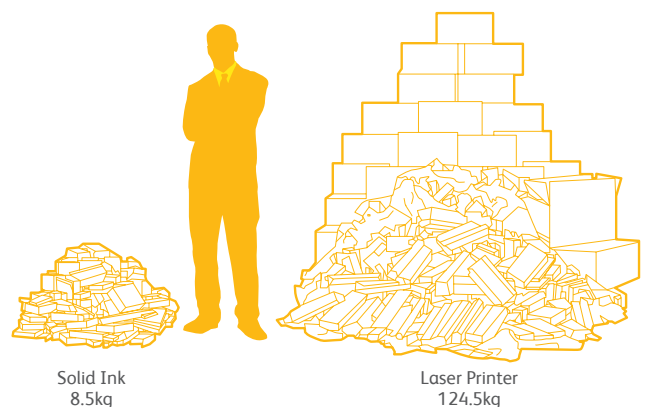
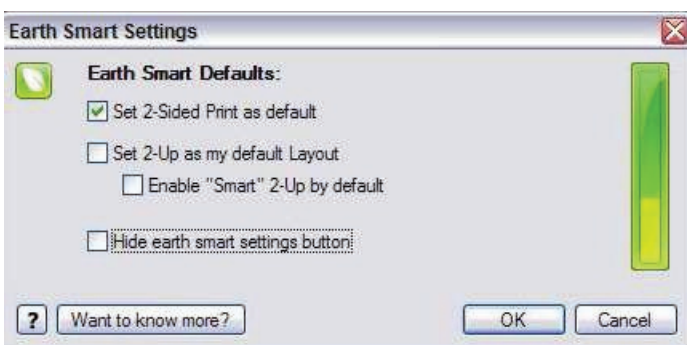
Unparalleled Ease-of-Use

- Intuitive control panel offers easy navigation and ease-of-use.
- Easy replacement of solid-ink sticks with no mess, spills and smudges to worry about.
- Increased reliability with fewer moving parts, making them virtually jam-free operations.
- Ink sticks can be replenished at any time, even during printing, unlike other printing technologies that store ink or toner in sealed containers inside the printer.
- Each ink stick has a unique shape, making it impossible to mis-load. The only consumables are the ink and maintenance roller. Cartridges, fusers, fuser oil etc required by other printers are not required.
- High yield ink sticks at up to 16,700 pages for Black and up to 17,300 pages each for Cyan, Magenta and Yellow.



Environmentally Conscious

- **ENERGY STAR® qualified.**
The ColorQube 8870 meets the stringent ENERGY STAR® requirements for energy usage.
- **Earth Smart Print Driver settings.**
Environmentally friendly features like 2-sided printing (duplex-enabled configurations) and 2-up layout are easily accessible in a single pop-up window.
- **Optimise energy usage.**
Intelligent Ready technology learns your workgroup's usage patterns and moves to low power mode when you are least likely to use it.
- **Minimise shipping costs and storage space.**
Solid ink cubes cost less to ship as they are much lighter and have smaller packaging than toner cartridges from laser printers. They also produce up to 90% less waste.



Approximate amount of waste generated by printing 4,000 pages per month over 4 years.

Specifications of ColorQube 8870

Print Function

Print Speed	Up to 40 ppm for monochrome and colour
Print Resolution	Standard: 525 x 450 dpi Maximum: 2,400 FinePoint™
Maximum Duty Cycle	120,000 pages/month
First-page-out Time	As fast as 5 seconds
Memory (Std / Max)	512MB / 2GB
Processor	1GHz
PDL	PS3, PCL 5c, PDF
Connectivity	Ethernet 10/100/1000 BaseT Interface, USB 2.0, 802.1x
Supported Operating System	Windows® XP SP1, Windows Vista, Windows 7, Windows Server 2003, Microsoft Windows Server 2008, Mac 10.5+, UNIX
Input Paper Size	Multipurpose / Bypass: Letter, A4, Executive, B5 JIS, B5 ISO, A6, 3x5 Index Card, Statement, A5, Folio and Legal. Standard Feeder: 250 sheets Manual Feeder: 1 sheet Optional Feeder: 250 sheets Envelopes: US#10, C5, DL, Monarch, A7, US #6 3/4, US 5 1/2 Baronial, US 6x9, Japanese Choukei 3 Gou, Japanese Choukei 4 Gou Standard: Legal, Folio, A4, Letter, Executive, B5 JIS, B5 ISO, Statement, A5
Input Paper Weight	60 to 220gsm
Media Input Capacity	Standard: 625 sheets Maximum: 2,200 sheets
Media Output Capacity	350 sheets
Dimensions (WxDxH)	368 x 406 x 521mm
Weight	27.4kg
Power Support	240Vac 50 / 60Hz 12 – 6A
Power Consumption	Fast Colour: 291W (230v) Standard: 264W (230v) Enhanced: 243W (230v) Photo: 175W (230v) Standby: 107W Sleep: 47W
Environment	Temperature: 10°C - 32°C Humidity: 10% - 80%
Noise Levels	Printing (Enhanced): <59dBA Standby: <31dBA
Security	SSLv3, IPsec, 802.1x, HTTPS, IPPS, SMTP Authentication, IP Filtering, Hard disk overwrite security, Image overwrite, Audit log, Xerox Secure Access Unified ID System®
Warranty	One year on-site warranty

Consumables

Black ColorQube Ink (up to 16,700 pages*)	108R00988
Cyan ColorQube Ink (up to 17,300 pages*)	108R00985
Magenta ColorQube Ink (up to 17,300 pages*)	108R00986
Yellow ColorQube Ink (up to 17,300 pages*)	108R00987
Maintenance Kit (Standard Yield - up to 10,000 pages*)	109R00784
Maintenance Kit (High Yield - up to 30,000 pages*)	109R00783
Waste Tray	109R00754
Cleaning Kit	016184500

Accessories

Replacement Paper Tray	097S04143
525 Sheet Feeder	097S04142
System Cart with Storage Drawer	097S03636
512MB Memory	097S03635
Productivity kit with hard drive	097S04141

* Average standard pages. Declared yield in accordance with ISO/IEC 24711. Yield will vary depending on image, area, coverage and print mode.

+ Yield may vary based on job length, media size, media type and orientation.

What Comes in the Box

- ColorQube 8870 Colour Printer
- Solid Ink Rainbow Pack plus a preloaded starter stick of each colour (total capacity = 3,000 pages per colour)
- Software and Documentation CD (with Quick Installation Guide, Quick User Guide, User Manual, System Admin Guide)
- Power Cable

Descriptions in this material, product specifications and/or appearances are subject to change without prior notice due to improvements. Please note that the product colour appears differently from the actual colour as a result of properties of papers or printing ink. Windows is a registered trademark of Microsoft Corporation. Macintosh, Mac OS and Ether Talk are trademarks of Apple Computer, Inc. Other company names or product names are registered trademarks or trademarks of each company.



Reproduction Prohibitions Please note that reproduction of the following is prohibited by law. Domestic and overseas bank notes and coins, government-issued securities, national bonds and local bond certificates. Unused postage stamps and post cards. Certificate stamps stipulated by law. The reproduction of works for copyright purposes (literary works, musical works, paintings, engravings, maps, cinematographic works, photographic works, etc.) is prohibited except when they are reproduced personally, at home or within limited range according to the above. This product is equipped with an anti-counterfeit feature. This feature is not intended to prevent illegal reproduction. Be extremely careful about the management of equipment used.

For Your Safe Use

- Before using the product, read the Instruction Manual carefully for proper use.
- Use the product with an appropriate adequate power source and voltage displayed.
- Be sure to establish a ground.
- In the case of a failure or short circuit, an electric shock may result.

For more information or detailed product specifications, please call or email or visit our website at:

Fuji Xerox Asia Pacific

14a Rodborough Road Frenchs Forest NSW 2086

Australia 1300 793 769

New Zealand 0800 993 769

www.fujixeroxprinters.com.au

www.fujixeroxprinters.co.nz

