



Consumables*

Toner Cartridges	
Black (up to 4,000 pages)	CT200649
Cyan (up to 4,000 pages)	CT200650
Magenta (up to 4,000 pages)	CT200651
Yellow (up to 4,000 pages)	CT200652

Capacities are approximate, based on 5% coverage on an A4-size page

Additional Supplies

Drum Cartridge (up to 42,000 pages for black and white and up to 10,500 for colour printing)	CT350390
---	----------

Accessories/Options

250 Sheet Feeder	EL300459
500 Sheet Feeder	EL300460
Duplex unit	EL300461
Network Expansion card	EL300462

Additional Memory

128MB Memory	E3300063
256MB Memory	E3300061
512MB Memory	EL300452

For more information or for your nearest authorised Fuji Xerox Printers reseller, visit our web site or call:

Australia
Ph: 1300 793 769

New Zealand
Ph: 0800 993 769

China
Ph: (86) 010 6588 6633

Hong Kong
Ph: (852) 2 513 2888

Korea
Ph: (82) 2 528 5807

Malaysia
Ph: (60) 3 757 8877

Singapore (ASEAN Headquarters)
Ph: (65) 6 251 3006

Taiwan
Ph: (886) 2 2713 1399

Thailand
Ph: (66) 2 617 6700

Vietnam
Ph: (84) 8 829 0038

www.fxprinters.com

Configurations

Performance	
Print speed	25ppm black and 5ppm colour
Print speed duplex	17.5 Impressions pm black and 5 Impressions pm colour
First page out	17 secs colour, 8 secs black
Warm up time	Less than 37 seconds
Memory (Std / Max)	64/576 MB RAM
Processor	300MHz CPU and ASIC co-processor
PDL (Page Description Language)	GDI (multi language E/KO/SC/TC)
Maximum duty cycle	Up to 45,000 pages/month
Print Quality	
Print resolution	600 x 600 dpi, 9600 x 600 dpi Image Enhancement
Networking	
Network connectivity	IEEE1284 parallel, USB 2.0 and Ethernet 10/100BaseT (TCP/IP)*
Paper Handling	
Automatic 2-sided printing	Optional
Paper input capability	200-sheet feeder, (Optional 250-sheet feeder or/and 500-sheets feeder (950 max)
Paper output capability	250-sheet standard tray face down
Productivity	
Standard Features	Multi-up printing, poster printing, watermark printing, rotate image, booklet creation, zoom support.
Warranty	One year on-site warranty

Specifications

Network/Software

Printer management CentreWare IS Embedded Web Server

Font capabilities Windows fonts

Printer drivers Windows 2000, XP and 2003 ((Win98/Me/ NT4.0, MacOS X + (USB only), Linux - available after Aug 2005)

Paper Handling

Standard tray 64 - 216 gsm bond and card stock; transparencies, labels, envelopes. Media sizes: Single-sided printing: letter, legal, folio, executive, statement, A4, A5, B5-JIS, envelopes, commercial 10, monarch, DL, C5, C6, and custom sizes from (90 - 140mm x 216 - 356mm); automatic 2-sided printing (75 - 120 gsm): letter, A4, folio, legal 13in, legal 14in.

Tray 2 and 3 (optionals) Media sizes: Single-sided printing: letter, legal, folio, executive, statement, A4, A5, A6, B5-ISO, B5-JIS, and custom sizes from (90 -140mm x 216 - 356mm); automatic 2-sided printing (60 - 105 gsm): letter, A4, folio, legal 13in, legal 14in.

Special Features

Productivity tools watermarks, custom page size default register, poster, scaling and scale-to-fit, N-up printing, toner save mode, booklet printing (required optional duplex unit).

Colour Controls

Image Types Normal, Photo, Presentation, Web pages, POP

Image Auto Corrections Off, Standard, Portrait, Landscape, Map

Operating

Dimensions 425W x 422D x 437H mm / 24.5Kg (excluding CRUs)

Environment Temperature: non-operating: -20° - 40° C, Operating: 5° - 32° C; Relative humidity: non-operating: 5-85% RH, Operating: 15-85% RH.

Noise level <64 dB in operating mode

Electrical 200 - 240VAC (110VAC Taiwan only)

Power consumption 290 Watts running and 72 Watts in standby

Power Save <9 Watts

Regulatory FCC Part 15 Subpart B, UL listed to UL 1950, UL Certified to CSA - C22.2 No 950-M93, FDA 21 CFR Sub J, CE Mark applicable to directives 73/23/EEC and 89/336/EEC, TVU - GS Mark, IEC 950 Second Edition (EN 60950, EN 60825)

* The Network Expansion Card option is required for SMB, (TCP/IP, Net Beui), IPX/SPX, NetWare

Printer is delivered with 1,500 pages of colour toner

Fuji Xerox Printers. **X**pect more.

For more information, please contact:



Small in price
and big in performance
from the
colour
expert



DocuPrint C525 A

Colour Laser Printer

Amazing colour and fast black and white printing.

The DocuPrint C525 A offers outstanding value for customers who require fast black and white printing and high quality colour printing at a small price.



DP C525 A fully configured

Value packed colour printing

The DocuPrint C525 A printer is delivered with everything you need for immediate productivity. The 'ready out of the box' package even includes 10/100BaseT (TCP/IP)* network interface so that you can share it with your colleagues.

- 25 ppm black and white output; 5 ppm colour. You will enjoy the benefit of a fast black and white printer with a colour option
- 64 MB of standard memory ensures that you can print complex documents
- Optional automatic two-sided printing saves paper and simplifies production of professional-looking documents
- Quick response – first colour page in under 17 seconds; 8 seconds for black-and-white
- Generous 200-sheet paper tray, with optional 500 and 250-sheet trays for a total of 950 sheets
- 300 MHz CPU ensures unmatched performance in black and white or colour printing



Standard TCP/IP support

Excellent print quality

Enjoy crisp and sharp laser output that is so popular among business users. Produces vivid and high impact professional looking documents every time.

- 600 dpi Standard Mode produces excellent results; crisp 9600 x 600 resolution enhancement when the highest print quality is needed
- Fuji Xerox technology automatically gives you the best results for photos, graphics and text



Easy drum replacement

Innovative features that offer you more

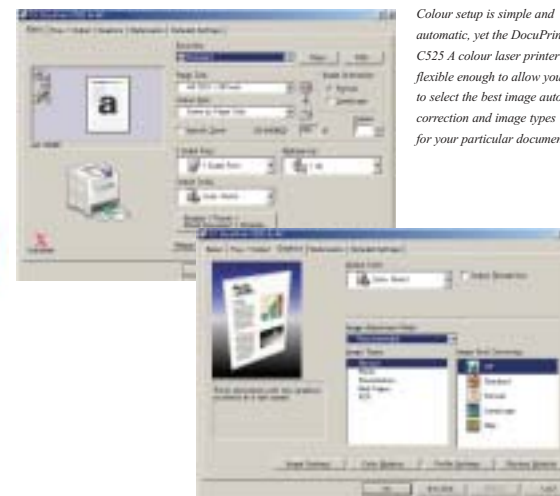
The DocuPrint C525 A is an extraordinary colour printer that comes with a host of innovative and useful features such as multi-up printing, rotate image and many more so that you can enjoy improved efficiency and higher productivity.

- Intelligently engineered to simplify both setup and everyday use – a few mouse clicks is all it takes for any operation
- The network ready DocuPrint C525 A can be made accessible to everyone on the office network
- The graphical and intuitive driver ensures printing in colour or black and white is very simple; for example selecting image auto correction only requires a couple of mouse clicks.
- Embedded web server provides for easy management via any web browser



DocuPrint C525 A
Colour Laser Printer

Colour setup is simple and automatic, yet the DocuPrint C525 A colour laser printer is flexible enough to allow you to select the best image auto correction and image types for your particular document.



Good design means great value.

The DocuPrint C525 A colour laser printer is a reliable and productive machine that leverages on Fuji Xerox's years of experience in black and white and colour printers. It uses the latest EA toner technology that saves toner, reduces machine contamination and uses less power, meaning that you not only get professional quality print results but you also save money in the long run.

- 1 The only colour laser in its class to offer standard network connectivity (TCP/IP)*
- 2 200-sheet multipurpose tray offers wide media flexibility: custom paper sizes, envelopes, transparencies and labels
- 3 Additionally, the DocuPrint C525 A colour laser printer offers an optional 250 and 500-sheet paper tray (total of 950 sheets)
- 4 Add a duplex option that saves paper and produces professional looking documents
- 5 Low running costs in black and white and colour will allow you to replace your old black and white laser printer and save money on running costs



DP C525 A with duplex unit

* TCP/IP support for Windows. An optional network expansion card is required for NetWare, SMB and IPP.