

Specifications

DocuCentre - II C3000

Output Speed - Printing and Copying

A4 Monochrome (LEF)	32 ipm
A4 Colour (LEF)	8 ipm

Network Printing

Processor Power	PC-300MHz
System Memory (Max)	512MB
Hard Disk	40GB
Network Interface	Standard: Ethernet 100Base-TX / 10Base-T USB 2.0
Printer Languages	Standard: PCL6 Optional: Adobe PostScript 3
Resolution	Up to 1,200 x 600 dpi
Operating Systems	Windows® 95 / 98/Me, Windows NT® 4.0, Windows® 2000 / XP
Protocols	TCP / IP, NetWare, EtherTalk (AppleTalk), IPP, Port9100

Copying

FCOT (from DADF with HDD)	Colour: 23 seconds or less Monochrome: 9.8 seconds or less
Concurrency	Yes
Resolution	600 x 600
Reduction / Enlargement	25% to 400%
Maximum Set Quantity	999 sheets
Internal Copy Auditor	Standard
Foreign Device Interface (optional)	Interface to 3rd party access control devices

Network Scanning

Concurrency	Yes
Input Speed	Monochrome: 40ipm Colour: 13ipm
Resolution	600dpi, 400dpi, 300dpi, 200dpi
Maximum Scan Area	A3
Network Protocol (Network Scanning)	TCP / IP (Salutation, HTTP, SMB, FTP, SMTP)
File Formats	TIFF, PDF & JPEG
Document Management Fields	6
Scan Destinations	Email, Mailbox, PC / Server (using FTP / SMB protocol)

Facsimile Specifications

Transmission Time	Less than 3 seconds per page
Lines	1 line or 3 lines
Speed Dials / Group Dials	500 / 50
Sending Document Size	A4, A3

THE DOCUMENT COMPANY
FUJI XEROX

THE DOCUMENT COMPANY
FUJI XEROX

Paper Handling - DADF (Platen lid available as option)

Capacity	75 sheets
Paper Sizes	A5 to A3
Paper Weights	38 to 128 gsm

Paper Handling - Tray 1

Capacity	520 sheets
Paper Sizes	A5 to A3
Paper Weights	60 to 216 gsm

Paper Handling - Trays 3 & 4 (Two Tray Module)

Capacity	Tray 3: 520 sheets Tray 4: 520 sheets
Paper Sizes	A5 to A3
Paper Weights	60 to 216 gsm

Paper Handling - Trays 3 and 4 (Tandem Tray Module)

Capacity	Tray 3: 900 sheets Tray 4: 1,180 sheets
Paper Sizes	A4
Paper Weights	60 to 216 gsm

Paper Handling - Bypass Tray

Capacity	97 sheets
Paper Sizes	A5 to A3
Paper Weights	60 to 216 gsm

Finisher A - Internal Stapler (Optional)

Paper Sizes	B5 to A3
Stacker Capacity	500 sheets
Stapler Capacity	50 sheets
Staple Positions	Front corner (single)
Staple Cartridge	5,000 staples

Finisher B - Stacker / Stapler (Optional)

Paper Sizes	B5 to A3
Stacker Capacity	Non-stapled: 1,000 sheets Stapled: 50 sets
Stapler Capacity	50 sheets
Staple Positions	Front corner (single), rear straight (single), dual
Staple Cartridge	5,000 staples

General

Electrical Requirements	240V 8A
Power Consumption	Standby 120 watts Running 1101.6 watts Power Save 87.7 watts
Warm up	42 seconds or less
Dimensions	640mm x 654mm x 1,112mm (WxDxH - excluding finisher)
Weight Approx	98kg (excluding options)

¹ May require additional optional accessories

DocuCentre - II C3000



For detailed product specifications, optimum performance parameters & service clearances, refer to the DocuCentre II C3000 Customer Expectation Document

13 14 12

www.fujixerox.com.au

Fuji Xerox Australia Pty Ltd, ABN 63 000 341 819.
Australian Head Office: 101 Waterloo Rd, North Ryde NSW 2113.
Phone (02) 9856 5000 Fax (02) 9856 5003



©2006 Fuji Xerox, Xerox, The Document Company, the stylised X, Document Centre, DocuCentre, DocuShare are registered trademarks/trademarks of Fuji Xerox or its associated companies. Other trademarks are the property of their respective owners. Whilst the information is correct at the time of printing, Fuji Xerox Australia Pty Ltd reserves the right to change the specifications or withdraw supply of the equipment/software described herein without notice. Quality Endorsed Company ISO 9001:2000. GEC1950 / 01 SAI Global, Certified Environmental Management ISO 14001:2004. C10094 SAI Global. Printed in Australia, July 2006.



Protecting the environment is a fundamental component of our company's commitment to corporate citizenship.

At Fuji Xerox Australia, we supply products that have been designed with both our customers and the environment in mind. As a world leader in the development of parts and components Remanufacturing Programs, we have made Eco Manufacturing an integral part of our business.

All our sites have achieved ISO 14001 Environmental Management System Certification, as a demonstration of our commitment to protecting the environment.



Affordable **colour**
now that's a **bright idea**

Why Multifunction, Why Fuji Xerox, Why colour?

Are you operating on a tight budget? Concerned about the costs associated with a colour multifunction device? Unsure of the value such a device can bring?

Welcome to a world of consolidated savings where together with Fuji Xerox you can harness the power of colour printing whilst also minimising expenses.

Why a Multifunction device?

Look around your office, are you currently using separate devices to print, copy, scan and fax? If so, have you ever considered how much they're costing you or how much you could save with a consolidated multifunction solution?

Utilising multiple single function devices can be filled with expenses you may not have thought of. Expenses can include the cost of toner, servicing the device, spare parts, the cost of multiple network connections and the cost of the valuable office space they tend to consume.

Consolidating your copy, print, scan and fax devices into one robust Fuji Xerox multifunction unit will bring you a number of benefits:

All inclusive cost per page

This charge covers all your toner consumption, service call outs and spare parts where necessary.

Save valuable floor space

By consolidating all your devices into one compact unit you can substantially reduce the amount of office floor space they consume.

If One function fails, They DON'T all fail

A common misconception with multifunction devices is that if one function fails, the entire machine is inoperable. With Fuji Xerox devices this is not the case, whilst functions can operate concurrently, they are not dependant on one another and will not influence one another. So, if one function happens to fail, the others will continue to do their jobs.

One Supplier for All your Document Requirements

Whether you're ordering consumables, requesting information or logging a service call, you'll always be dealing with one reputable supplier... Fuji Xerox Australia.



scan

Digitising and distributing hard copy documents is easy using the DocuCentre - II C3000's colour scanning technology. With a few simple keystrokes at the user interface panel, documents can be scanned and shared with others via email, SMB/FTP transfer or mailboxes at the device.

Password Protect PDF

Hardcopy documents scanned as PDF files can be password protected at the user interface with restrictions imposed for opening, editing, selecting or printing the document.

Job Flow Sheets

This feature allows you to route scanned documents to multiple destinations, see diagram below:



Additional Scan Features

- Browse network folders for appropriate scan destinations at the user interface
- Search recipient email addresses by entering their name at the user interface
- Restrict access to the scan to email "From" field
- Convenient mailbox scanning and retrieval as a PDF to reduce mail server traffic

fax

Whilst traditional walk up faxing is available on the DocuCentre - II C3000, it also incorporates a number of additional fax features designed to save you time and money.

PC Fax¹

Use this feature to manage your time more effectively. Send faxes directly from the PCL6 print driver on your PC and avoid having to print your documents before faxing.

Electronic Fax¹

Concerned about faxes getting lost in amongst piles of other documents? This feature provides peace of mind by routing incoming faxes to a nominated email address, mailbox or network connected PC.

Fax Re-Send

This handy feature will capture and store undelivered faxes sent

directly from the device. As a result, you can now edit the fax number at the user interface and resend if required, without having to rescan the document(s).

Dedicated Trays

If you like your faxes printed, why not configure the standard side output tray as your dedicated fax output tray.



Copy



Print



Scan



Fax



Email

Device Management

Control the costs associated with your DocuCentre - II C3000 and administer the device from your network connected PC using the following FREE management tools:

Internal Auditron / Xerox Standard Accounting - set limits on the quantity of print, copy, scan and fax jobs individual users can produce and track the usage through a printed report or CSV file.

CentreWare Internet Services - configure device settings, monitor usage and consumable status, upload address books, enable Auditron and much much more.

CentreWare Web - install, configure, report and troubleshoot all SNMP devices on your network regardless of manufacturer.

Device Security

In this day and age, the security of confidential documents is paramount. The DocuCentre - II C3000 provides you with a number of security options designed to enhance your peace of mind.

Secure Print - enhances the security of confidential documents sent to print by releasing them only when the user enters a predefined password at the device.

Data Security Kit - a protection kit that provides the option of overwriting, encrypting or completely clearing the data resident on your device's hard disk drive.

SSL/sMIME - for secure communication with your device on your network or over the Internet.

copy

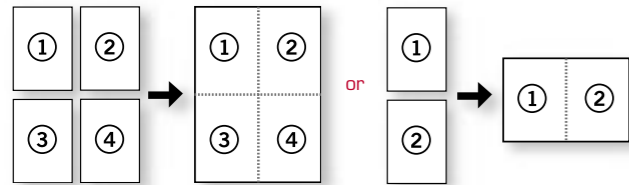
The DocuCentre - II C3000 produces output at a speedy 32 ipm black & white and 8 ipm colour. Its rich feature set and ability to process multiple jobs concurrently make it a valuable and productive device for your users.

Automatic Colour Sensing Technology Only Pay for what you use

Using inbuilt image sensing technology the DocuCentre - II C3000 automatically recognises colour on a page and will only charge you for what you use.

N-Up Copying

Conserve paper and toner by printing multiple pages (up to 32 pages) on one sheet.



Customisable User Interface

With a customisable User Interface not only can you standardise the look and feel of all applicable Fuji Xerox devices, but you also have the power to control what features you make available to your users.

Additional Copy Features¹

- Job Build
- Poster Creation
- Cover Insertion
- User Defined Annotations
- Automatic media identification & paper tray switching

Customisable User Interface



Fully customisable touch screen User Interface layout

Convenient access to most commonly used functions such as copying, network scanning and faxing

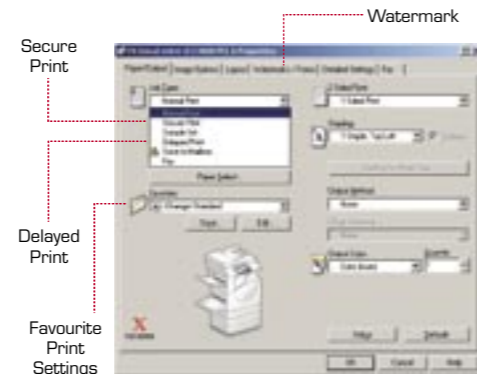
Customisable hard button short cut keys

print

The DocuCentre - II C3000 produces quality output at 1,200 dpi x 600 dpi and is equipped with features to meet all your print requirements.

Print Drivers

The PCL6 print driver is standard with this device. Boasting the similar easy to use interface as you'll find on our other office multifunction devices, it will help substantially simplify your print production process.



An Adobe Postscript 3 print driver is also available if required.

Delayed Print

Manage your time and device usage more effectively by scheduling large print jobs to run outside your regular business hours.

Favourite Print settings

Save time by storing the settings of frequently printed documents in the favourites menu of your print driver.

Watermarks

Insert and print watermarks within your documents as required.

Benefits of colour

The benefits of using colour are manifold. Colour makes any report or marketing collateral more appealing to the eye and typically has a greater impact than traditional black & white output.

A study carried out in the USA*, returned the following interesting results:

Colour Retains Attention



Your company's first impression is crucial. The decision whether to read or reject direct mail pieces is made by readers in just 2.5 seconds. Using colour can help keep your material on their desk rather than in the bin.

Colour Gains Readership by 80%



Adding colour to documents helps information get read. This is particularly useful when you'd like to draw your readers' attention to specific information such as a phone number to call, a chart, a warning etc.

Colour Makes an Impression that is 39% More Memorable



Direct mail pieces and collaterals leave a lasting impression if they're in colour. This makes follow up calls more successful.

Colour Increases Comprehension by up to 73%



Your existing and potential customers can understand your message faster and more clearly thus helping speed up the sales process.



Want to take advantage of the benefits of a colour MFD, but concerned about what this might do to your budget?

Colour is NOT expensive

Colour will now only cost as much as you're willing to spend

Using Fuji Xerox's secure colour technology, you can restrict and control users' access to colour ensuring that colour is only used for its intended purposes.

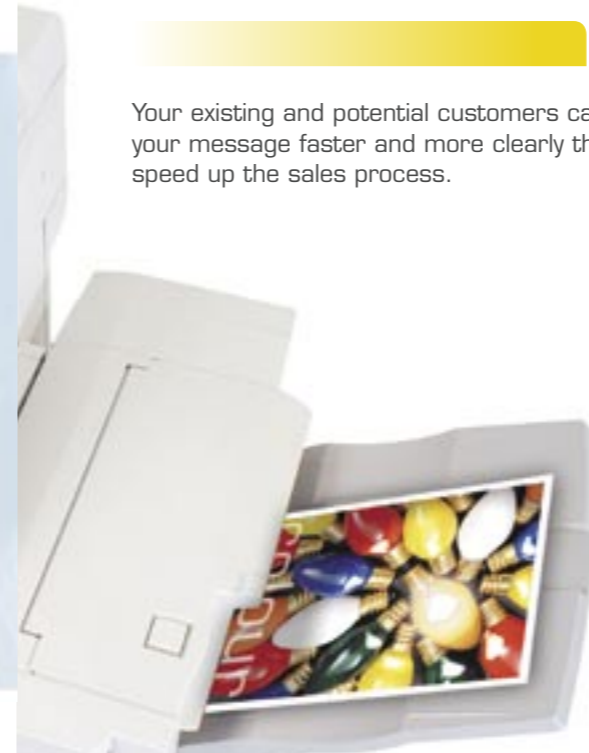


Only pay colour rates for the colour pages you use

Enhance Your Document Production Capabilities

Do you currently spend a lot of money outsourcing print work? With a Fuji Xerox colour multifunction device you'll find previously outsourced work such as letterheads, flyers, posters etc can now be produced in house on demand with minimum fuss and what's better, minimum cost.

*Source: Loyola College Maryland U.S.A



Your Compact, Intuitive Multifunction device with colour on demand

Introducing DocuCentre - II C3000, a truly versatile device, it offers you the flexibility to configure it according to your business requirements. Available as a stand alone copier in its most basic form, its functionality can be extended to include printing, scanning and / or faxing capabilities and of course, it includes colour on demand.

DocuCentre - II C3000



DocuCentre - II C3000 with Tandem Tray module & optional space saving internal A-Finisher

A range of options to meet your needs

Configure your DocuCentre - II C3000 to meet all your functional, paper tray and finishing needs with the flexibility to upgrade functionality as and when required ... keeping you productive today and in the future.

Functional Configurations

Available as a stand alone copier as standard, the DocuCentre - II C3000 can also be configured to include printing, scanning and/or faxing.

So, if your requirements today are only for a high quality copier, you can rest-assured that additional functionality can be added down the track as your business requirements expand and change.

Paper Tray Flexibility

DocuCentre - II C3000 is available with one fully adjustable paper tray as standard and two additional paper tray options or a stand to meet your document production requirements. You can purchase this device with:

- One Tray + Stand
- One Tray + Two Tray Module
- One Tray + Tandem Tray Module

Finishing

Want the ability to improve productivity by producing stapled output on the fly? With the DocuCentre - II C3000, this is easier than ever. This device is available with two finishing options that make the manual collation and stapling of documents a thing of the past.

A-Finisher – an internal finisher capable of stapling up to 50 sheets. This is the perfect cost effective solution that also saves valuable floor space.

B-Finisher – This external finisher provides a range of multiposition stapling options and greater output paper stacking capacity for large jobs.

Emulsion Aggregation – High Grade (EA – HG) Toner

The Environmentally friendly EA - HG toner used in Fuji Xerox devices produces finer toner particles, uniform in size and shape to create distinctly smoother, sharper images than conventional toners.



Conventional toner suffers from screen dispersion due to particle size and uneven shape.



EA - HG Toner's uniform shape & size, reproduces screens precisely without unwanted toner dispersion.

