

DocuCentre

C3300

C2200

C2201

**FUJI xerox** 

# DocuCentre-III C3300 / C2200 / C2201

## Digital Colour Multifunction Device

Powerful performance that will benefit  
your business and the environment



# Creating an integrated office system to power your business

## The range of DocuCentre-III C3300/C2200/C2201 multifunction devices

are equipped with many advanced features to power your business with a focus on environmental performance. They are the first digital colour multifunction devices in the industry to receive the prestigious Ministry of Economy, Trade and Industry prize in the Eco-Products Category at the 4th Eco-Products Awards in Japan for use of industry-first environmental technologies: new LED print head technology; lead-free shafts; and biomass plastic.

If you're used to black and white only, consider the benefits of adding a splash of colour to your office documents and marketing materials. Colour captures attention, enhances productivity, improves communication and could help boost sales. With many businesses competing for a share of the market, companies can greatly enhance their business image by using colour in business documents.

Fuji Xerox multifunction devices are the first in the industry to meet the requirements of "GECA 10-2008 Printers and Imaging Equipment" for the Australian ecolabelling program. Further information can be obtained from <http://www.GECA.org.au>



### Features at a glance

- Print, copy, scan and optional faxing
- Fast printing and copying at up to 35 ipm
- Intuitive, easy-to-use colour user interface
- Most energy efficient device in its range
- Equipped with powerful security measures such as IPsec, SNMPv3 and IEEE802.1x.
- USB 2.0 interface for direct print (optional)
- Compact and versatile finishing capabilities
- IPv6 Ready: The next generation internet!



DocuCentre-III C3300 complete with optional Finisher-B1 providing ample input and output paper capacity for your workgroup

# Configuration and finishing options

## Compact design

The design of the engine and paper output areas achieves a more compact and lightweight main unit. The Finisher-A1 (stapler) is fitted within the main unit providing a more space efficient design than conventional models.

## Breakthrough in LED print head technology for high-resolution, high-quality images

The newly developed LED print head technology achieves an output resolution of 1,200 x 2,400 dpi for superb image quality. The LED print head is compact, comprises less moving parts, emits less noise and achieves lower power consumption.

## Customisable user interface

The customisable user interface available with the DocuCentre-III C3300/C2200/C2201 devices allows for standardising the look and feel across all other applicable Fuji Xerox devices in the office.

## Universal design allowing for easy operation

The design of the DocuCentre-III C3300/C2200/C2201 is based on universal design principles. The functionality is easily understood so to enable a single user to operate the machine from 'start to finish'. The design incorporates lightweight, easy-to-use drawers, as well as easy-to-see paper output areas.

## Finishing options

The DocuCentre-III C3300/C2200/C2201 can be configured to include any one of the following finishing options:

- Finisher-A1 - Internal Stapler
- Finisher-B1 - Stacker/Stapler/Hole Puncher/ Bi-Folder/ Booklet Maker (Folding line)<sup>1</sup>
- Booklet Finisher-C1 - Stacker/Stapler/Hole Puncher/ Bi-Folder/Booklet Maker

<sup>1</sup> Hole Puncher and Booklet Maker (Optional)



1

**Device**  
Standard Four Tray Configuration

2

**Finisher-A1**  
Internal Stapler

3

**Finisher-B1**  
Stacker/Stapler/Hole Puncher/ Bi-Folder/ Booklet Maker (Folding line)

4

**Booklet Finisher-C1**  
Stacker/Stapler/Hole Puncher/Bi-Folder/ Booklet Maker



1

One touch buttons for fax and internet fax

2

Fully customisable colour touch screen layout

3

Convenient access to advanced functions such as copying, network scanning, faxing and email

4

Assign frequently-used features to the custom hard buttons

5

Users log-in to access the device and the usage of colour printing can also be managed

# Copy



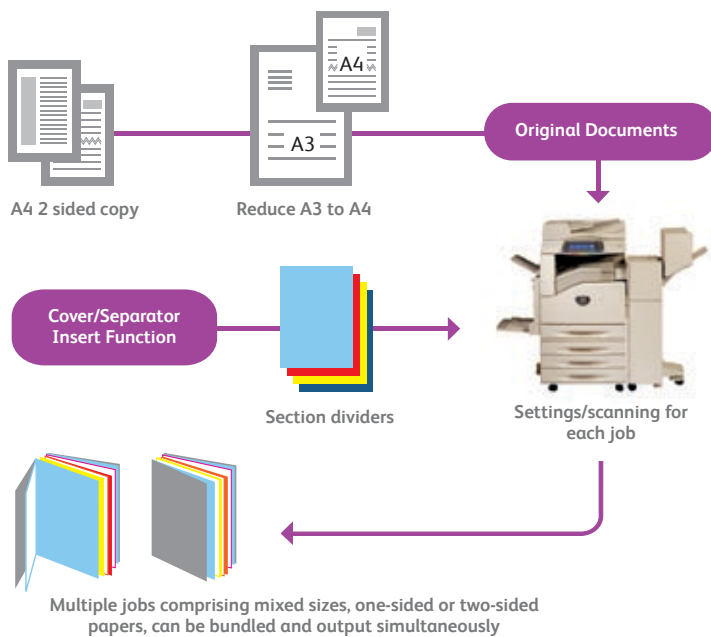
## Automatic colour sensing technology

Using built-in image sensing technology, the DocuCentre-III C3300/C2200/C2201 automatically recognises when colour is used and will apply the relevant charge.



## Job build

Merging and manipulating hardcopy documents is easy with this feature. It allows users to divide a copy job into numerous segments, apply unique settings to each, collate and print all segments; thus eliminating the need for manual copying and collation (see diagram below).



## User defined annotations

Add information such as stamp, date and page number. Custom annotations containing up to 32 characters can be made while the size, position and colour of annotations can be changed at any time.

## Additional copy features

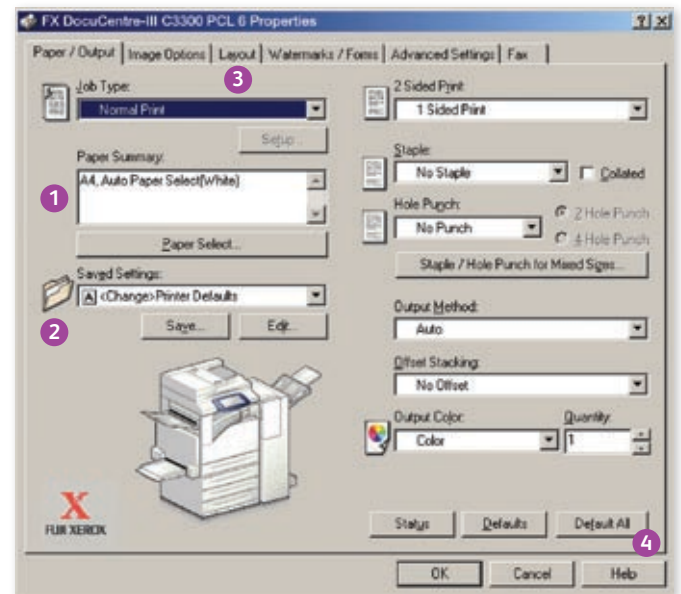
- Multiple-up and booklet creation
- Media identification & auto tray switching
- Poster creation
- Covers insertion

# Print



## WHQL certified print drivers

WHQL certified PCL6 (standard) and Postscript (optional) print drivers are available with these devices. With an easy-to-use interface, similar to those found on other Fuji Xerox office multifunction devices, your print production process will be substantially simplified.



- 1 Paper selection summary window
- 2 Favourite print settings
- 3 Drop down menu for secure print, fax, save to mailbox and more
- 4 Help function for feature descriptions and driver assistance

## Direct printing from USB (Optional)

Print PDF, XPS, and TIFF files from your USB 2.0 flash drive or JPEG files directly from camera media<sup>1</sup> from the multifunction device, there is no need for a PC to drive this process. This feature provides complete mobility by allowing users to release documents at any printer, anywhere in the organisation.

<sup>1</sup> JPEG files retrieved directly from the DCIM folder can be printed on the DocuCentre-III C3300/C2200/C2201

## Favourite print settings

Save time by storing the settings of frequently printed documents as favourites in your print driver. Settings include paper sizes, covers, duplexing, finishing and more.

## Additional print features

- Delayed print
- Secure print
- Watermark/digital secure watermark (optional)
- Email print job confirmation

# Scan



# Fax



## Create searchable PDF's on the fly (Optional)

Scanned documents can be transformed into searchable PDF's in one easy step from the device user interface, eliminating the need for expensive desktop OCR (optical character recognition) packages that are usually licensed to a single workstation. Documents can be delivered directly to a desktop, network folder or an email address. This feature maximises productivity through an efficient workflow process, and enables electronic document transfer, reducing paper wastage.

## Password protect PDF documents

Hardcopy documents scanned as PDF's can be password protected with restrictions imposed for opening, editing, selecting or printing the document.

## Thumbnail display (Optional)

The retrieval of documents stored at the device is now easier than ever. Every page of the document is saved in the mailboxes and can be viewed as thumbnails at the user interface of the device (see image below).



## Additional scan features

- Restrict access to addresses not listed in the local address book
- Browse network folders

## Fax restriction

You can restrict users from sending faxes to numbers not listed in your predefined address book. This security feature will help protect the leakage of confidential information and reduce costs by preventing users from using the fax function for non-business related purposes.

## Electronic fax (with optional Internet fax kit)

If there is a concern about faxes getting lost in piles of other documents, this feature eliminates paper wastage and provides peace of mind. It will route incoming faxes to a nominated email address as a TIFF file, or further distribution as required.



## Fax re-send

This handy feature will capture and store undelivered faxes sent directly from the device. This means that a fax number can now be edited at the user interface and resend if required, without rescanning the document(s).

## Additional fax features

- Supporting a fax header for sending Internet faxes, including information such as date and time and transmitter's name
- Additional screen to confirm the recipients fax number to prevent incorrect fax transmission

A truly advanced and intuitive multifunction device

# Device management

## CentreWare Web

This is a management tool making it easy for administrators to install, configure, manage, monitor and report on all devices on your network, regardless of manufacturer.

## CentreWare Internet Services

This feature allows administrators to configure device settings, monitor usage/consumable status remotely, upload address books, enable the auditoron and much more.

## Manage colour printing to minimise costs

Control costs by nominating when colour could be used and by who. This ensures that colour is available to those individuals who truly leverage its power - such as the sales teams and marketing department.

## Manage and track device usage

Using Xerox Standard Accounting, device usage data can be obtained and presented as a CSV file for use in accounting and spreadsheet applications.



1

Configure auditoron

2

Upload email/fax address books as csv files

3

Monitor paper tray/consumables status

4

Monitor job queues

5

Submit driverless print jobs

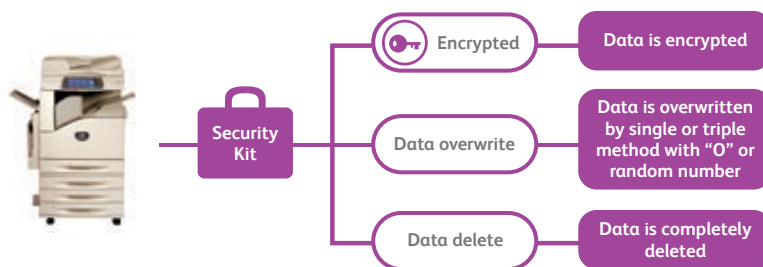
# Device security

## Secure print

Print jobs can be stored on the device and printed from the user interface after the correct password is supplied, eliminating paper wastage and securing confidential information.

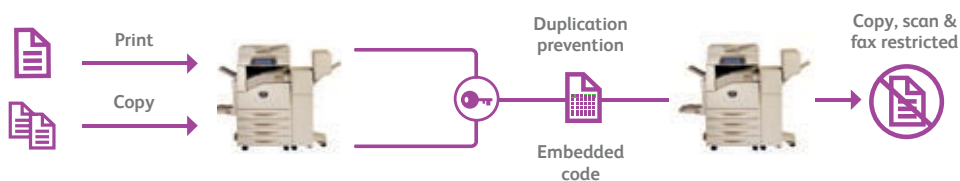
## Data security kit (Optional)

The data security kit available with DocuCentre devices provides administrators with three security options:



## Secure watermark (Optional)

The unauthorised reproduction of sensitive material can be prevented with the optional secure watermark kit. This is an easy way to embed duplication restriction codes in documents when printing or copying. Documents featuring this secure watermark can not be copied, scanned or faxed using similarly equipped devices.



User prints or copies document containing embedded duplication restriction code. Copying, scanning, or faxing the document is impossible.

# Enhanced environmental performance

The DocuCentre-III C3300/C2200/C2201 won the prestigious Ministry of Economy, Trade and Industry prize in the Eco-Products Category at the 4th Eco-Products Awards in Japan for use of industry-first environmental technologies: new LED print head technology; lead-free shafts; and biomass plastic.



Fuji Xerox multifunction devices are the first in the industry to meet the requirements of "GECA 10-2008 Printers and Imaging Equipment" for the Australian ecolabelling program. Further information can be obtained from <http://www.GECA.org.au>



## Energy efficiency

Energy consumption on this range of DocuCentre devices has been reduced to 2.2W in sleep mode, significantly lower than conventional colour devices available in its range. In fact, this range is not only energy star compliant but has power consumption similar to that of monochrome devices.

## Low noise emissions

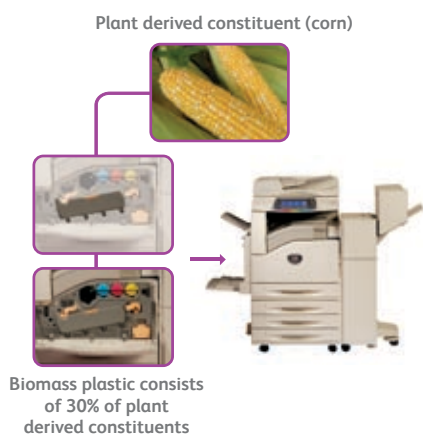
Noise levels have been lowered to 20dB in standby mode and up to 50dB during operation, equivalent to that of low-noise monochrome machines. This feature promotes a comfortable working environment.

## Lead-free shafts

Fuji Xerox has gone beyond compliance in the removal of hazardous substances by incorporating lead-free shafts in this range of products. It is the first time that a manufacturer in this industry has put lead-free shafts to full-scale use in multifunction devices.

## Employment of biomass plastic

Biomass plastic, comprising more than 30% of plant-derived constituent (corn), is used in specific device parts. The manufacturing process of biomass plastic is less energy intensive than traditional methods. The carbon footprint of producing the biomass plastic is 16% lower than conventional plastic (ABS resin).



## Fuji Xerox and environmental sustainability

Fuji Xerox technology and services are designed and managed to improve sustainability performance for its customers. Our equipment features environmentally responsible design and energy efficient enhancements. Our document software and digital technologies help reduce paper wastage and our services enable clients to improve the efficiency of document intensive business processes and optimise their equipment infrastructure to save costs and cut carbon emissions.

### Design for the environment

Every piece of Fuji Xerox equipment is designed with the environment in mind and our achievements include:

- Eliminating the need to use hazardous material such as lead-based solder;
- Enabling low energy consumption during use of the machine;
- Utilising innovative and energy efficient toner;
- Minimising the use of new resources; and
- Facilitating the remanufacture or recycling of used machines and parts at end of life.

### A leader in product stewardship

Fuji Xerox was first in the industry with products made from reused components and takes responsibility for all end-of-life products. We achieve over 99% resource recovery from the products returned to us at end of life.

### Carbon calculator

Fuji Xerox Australia has developed a carbon calculator that estimates the energy consumed through the operation of an office document infrastructure. We can demonstrate how replacing and/or consolidating devices may reduce your carbon footprint while providing enhanced functionality and a platform for future innovation.

[www.fujixerox.com.au/carbon\\_calculator](http://www.fujixerox.com.au/carbon_calculator)

# Specifications of DocuCentre-III C3300/C2200/C2201 Series

## Copy Function

	DocuCentre-III C3300	DocuCentre-III C2200	DocuCentre-III C2201
Type	Console Type		
Memory	768MB (Max. 1.5GB)		
HDD	40GB <sup>1</sup> (standard)		
Scanning Resolution	600 × 600dpi		
Warm-up Time	35 sec. (at room temperature 20°C)		
Original Paper Size	Max. A3 for both sheet original and book original		
Output Paper Size	Max. A3, [For Bypass Tray, Max:12.6x17.7" (320x449.6mm), 12x19" (304.8x482.6mm)] Min. A5, [For Bypass Tray, Postcard (100x148mm), Envelope (120x235mm)]		
Output Paper Weight	Tray 60 - 256gsm, Bypass Tray 55 - 256gsm		
First Copy Output Time	BW: 5.0sec / Colour: 6.4sec (C3300), BW: 6.7sec / Colour: 8.7sec (C2200 / C2201)		
Continuous Copy Speed	A4: 35-sheet <BW>	25-sheet <BW>	25-sheet <BW>
	A4: 35-sheet <Colour>	25-sheet <Colour>	20-sheet <Colour>
	A3: 20 ppm, 20 ppm	14 ppm, 14 ppm	14 ppm, 11 ppm
Paper Tray Capacity	Standard: 500 sheets x 4 Tray + Bypass 90 sheets Max: 2,090 sheets		
Output Tray Capacity	400 sheets (A4LEF), 200 sheets (A3)		
Power Supply	240V, 50Hz		
Power Consumption	2.2KVA (AC220±10%) / 2.4KVA (AC220+10%) / 1.65KVA (110V±10%) In Sleep Mode: 2.2 W, In Low Power Mode: 81W		
Dimensions	W 640 x D 679 x H 1,126mm (With Duplex Automatic Document Feeder)		
Machine weight	132kg		
	<sup>1</sup> Usable Space: 35GB		

## Print Function

	DocuCentre-III C3300 / C2200 / C2201
Type	Built-in Type
Print Resolution	1,200 x 2,400dpi, 1,200 x 1,200dpi
PDL	PCL6, PCL5 (standard), Adobe® PostScript® 3™ (optional)
Operating System	Standard (PCL6/PCL5): Windows® 2000, Windows® XP, Windows Server® 2003, Windows Server® 2008, Windows Vista® Windows® XP+64 Windows Server® 2003+64, Windows Server® 2008+64, Windows Vista® x 64 Optional (Adobe® PostScript® 3™): Windows® 2000, Windows® XP, Windows Server® 2003, Windows Server® 2008, Windows Vista®, Windows® XP+64, Windows Server® 2003+64, Windows Server® 2008+64, Windows Vista® x64, Mac OS 8.6/9.2.2, Mac OS x 10.3.9 10.4.10 except 10.4.7, Mac OS X 10.5
Connectivity	Standard: Ethernet 100BASE-TX/10BASE-T USB2.0 Optional: Bidirectional Parallel IEEE1284-B

## Scan Function

	DocuCentre-III C3300 / C2200 / C2201
Type	Colour Scanner
Scanning Speed	BW: 50ipm, Colour: 45ipm
Scanning Resolution	600 x 600dpi, 400 x 400dpi, 300 x 300dpi, 200 x 200dpi
Connectivity	Ethernet 100BASE-TX/10BASE-T
Scan Destinations	Scan to Email, MailBox, PC/Server (using FTP/SMB protocol)

## Fax Function (Optional)

	DocuCentre-III C3300 / C2200 / C2201
Send Document Size	Max: A3, 11 x 17"
Recording Paper Size	Max: A3, 11 x 17", Min: A5
Transmission Time	Less than 3 seconds
No. of Fax Lines	PBX, PSTN, Max. 3 ports

## Duplex Automatic Document Feeder

	DocuCentre-III C3300 / C2200 / C2201
Capacity	75 sheets
Original Paper Size	Max: A3, 11 x 17", Min: A5
Output Paper Weight	38 - 128gsm In Duplex: 50 - 128gsm

Protecting the environment is a fundamental component of our company's commitment to corporate citizenship. At Fuji Xerox Australia, we supply products that have been designed with both our customers and the environment in mind. As a world leader in the development of parts and components Remanufacturing Programs, we have made Eco Manufacturing an integral part of our business. All our sites have achieved ISO 14001:2004 Environmental Management System Certification, as a demonstration of our commitment to protecting the environment.

Descriptions in this material, product specifications and/or appearances are subject to change without prior notice due to improvements. Please note that the product colour appears differently from the actual colour as a result of properties of papers or printing ink. Windows and Windows NT are registered trademarks of Microsoft Corporation. NetWare is a registered trademark of Novell, Inc. in the United States. Macintosh, Mac OS and Ether Talk are trademarks of Apple Computer, Inc. PostScript is a registered trademark of Adobe Systems Incorporated in each country. HP-GL is a registered trademark of Hewlett-Packard Company. Other company names or product names are registered trademarks or trademarks of each company.

Spares for the standard configuration of installed machines are supported for up to 7 years from the date the manufacturer ceases manufacturing new machines

## Side Tray (Optional)

	DocuCentre-III C3300 / C2200 / C2201
Paper Size	Max: A3, 11 x 17", Min: A5
Capacity	100 Sheets

## Finisher-A1 (Optional)

	DocuCentre-III C3300 / C2200 / C2201
Paper Size / Paper Weight	Max: A3, 11 x 17", Min: Postcards (100x148mm), 55 - 220gsm
Stacker Capacity	A4 Up to 500 sheets, A3 or larger: 200 Sheets, Mixed Size Stacking: 250 Sheets [With Staples] Up to 30 Sets
<b>Staple</b>	
Capacity	A4: 50 Sheets (Max 90gsm), B4 or larger: 30 Sheets (Max 90gsm)
Paper Size	Max: A3, 11 x 17", Min: B5 LEF
Position	Single (Front/Rear Angled Staple)

## Finisher-B1 (Optional)

	DocuCentre-III C3300 / C2200 / C2201
Paper Size / Paper Weight	Max: A3, 11 x 17", Min: B5, 55 - 220gsm
Stacker Capacity	A4 Up to 2,000 Sheets, [With Staples] Up to 100 Sets or 1,000 Sheets Booklet/Fold: Up to 50 Sets or 600 Sheets
<b>Staple</b>	
Capacity	50 Sheets (Max 90gsm)
Paper Size	Max: A3, 11 x 17", Min: B5
Position	Single (Front/Angled, Back/Straight), Dual (Parallel)
<b>Punch<sup>2</sup></b>	
Paper Size	A3, 11x17", B4, A4, A4LEF, Letter 8.5 x 11", Letter 8.5 x 11" LEF, B5LEF
Number of Holes	2/4 holes or US 2/3 holes
Paper Weight	55 - 200 gsm
<b>Booklet Finishing<sup>3</sup></b>	
Capacity	Booklet: 15 Sheets, Fold: 5 Sheets
Paper Size	Max: A3, 11 x 17", Min: A4, Letter 8.5 x 11"
Paper Weight	Saddle-Stapling: 64 - 80gsm, Half-Folding: 64 - 105gsm
	<sup>2</sup> Optional Finisher-B1 Punch unit is required
	<sup>3</sup> Optional Finisher-B1 Booklet unit is required

## Booklet Finisher-C1 (Optional)

	DocuCentre-III C3300 / C2200 / C2201
Paper Size / Paper Weight	Max: SRA3, 12 x 19", Min: B5, 55 - 220gsm
Stacker Capacity	A4 Up to 1,500 Sheets, [With Staple] Up to 200 Sets or 1,500 Sheets Booklet/Fold: Up to 20 sets
<b>Staple</b>	
Capacity	50 Sheets Max 90gsm
Paper Size	Max: A3, 11 x 17", Min: B5
Position	Single (Front/Back/Angled), Dual (Parallel)
<b>Punch</b>	
Paper Size	A3, 11 x 17", B4, A4, A4LEF, Letter (8.5 x 11"), Letter (8.5 x 11") LEF, B5LEF
Number of Holes	2/4 holes (Option US 2/3 holes)
Paper Weight	55 - 220gsm
<b>Booklet Finishing</b>	
Capacity	Saddle-Stapling: 15 Sheets, Half-Folding 5 Sheets
Paper Size	Max: SRA3, 12 x 18", Min: A4, Letter (8.5 x 11")
Paper Weight	Saddle-Stapling: 64 - 90gsm, Half-Folding: 64 - 105gsm

## Customer Expectation Document (CED)

For detailed product specifications, optimum performance parameters & service clearances refer to Product Customer Expectation Document.



**Reproduction Prohibitions.** Please note that the reproduction of the following is prohibited by law: domestic and overseas bank notes, government-issued securities, national bonds and local bond certificates; unused postage stamps and some post cards; certificate stamps; and copyright material (literary works, musical works, paintings, engraving, maps, cinematographic works, photographic works etc) except where and to the extent that the local law provides otherwise. This product is equipment with anti-counterfeit feature. This feature is not intended to prevent illegal reproduction.



### For Your Safe Use

Before using the product, read the Instruction Manual carefully for proper use. Use the product with an appropriate adequate power source and voltage displayed. Be sure to establish a ground. In the case of a failure or short circuit, an electric shock may result.

For more information or detailed product specifications, call or visit us at

**Fuji Xerox Australia** 101 Waterloo Road,  
Macquarie Park NSW 2113  
Tel. (02) 9856 5000 Fax. (02) 9856 5003

[www.fujixerox.com.au](http://www.fujixerox.com.au)

