

ApeosPort

C7500

C6500

C5400

FUJI XEROX 

ApeosPort-II C7500 / C6500 / C5400 Digital Colour Multifunction Device

Stand out from the crowd
with amazing true to life colour



A sophisticated multifunction that can take on a heavy workload

Stand out from the crowd with your ApeosPort-II C7500/C6500/C5400.

Combining copy, print, and scan functionality with remarkable colour output and finishing capabilities, this device will help ensure your documents always impress.

Built on Fuji Xerox's successful Apeos iiX (Apeos Internet Integration based on XML and SOAP) platform, the capabilities of your ApeosPort-II C7500/C6500/C5400 device extend even further. This technology enables the transformation of your MFD into a customised document portal, connecting your organisation's business applications to simplify and streamline document workflows.



ApeosPort-II C7500 with optional High Capacity Feeder, Tri-fold unit and D++ Finisher

Configuration and finishing options

Functional Configurations

Available with copy, print and scan functionality, this device is equipped to manage heavy workloads and can be configured with a range of paper tray and finishing options.

Paper Tray Flexibility

ApeosPort-II C7500/C6500/C5400 is available with the following paper trays capable of holding up to 3,260 sheets as standard:

- 2 x Fully adjustable paper trays (A5 to A3)
- 2 x High capacity paper trays (A4 only)

For print intensive environments an additional High Capacity Feeder tray can be added, boosting paper capacity by up to 2,000 sheets.

Configuration Options:



1 High Capacity Feeder x 1

2 Base Unit with Large Colour User Interface

3 Simple/Offset Catch Tray

4 C-Finisher Stacker/Stapler/Puncher

5 C-Finisher ++ Stacker/Stapler/Puncher/Booklet Maker

6 D-Finisher ++ Stacker/Stapler/Puncher/Interposer/Booklet Maker with optional Tri-fold unit



1 Convenient access to copying, scanning, and email

2 Fully customisable User Interface layout

3 Customisable hard button shortcut keys

Finishing Options

ApeosPort-II C7500/C6500/C5400 can be configured to include any one of the following catch trays or finishers:

- Simple Catch Tray - for uncollated print documents
- Offset Catch Tray - collates and separates print documents
- C-Finisher - Stacker/Stapler/Puncher
- C-Finisher ++ - Stacker/Stapler/Puncher/Booklet Maker
- D-Finisher ++ - Stacker/Stapler/Puncher/Interposer/Booklet Maker
- Tri-Folder - C and Z folds (optional with the D-Finisher ++)

Customisable User Interface

The standard customisable user interface allows you to standardise the look and feel of these and all other similarly equipped Fuji Xerox devices in your office.

Copy



Capturing even the finest details, ApeosPort-II C7500/C6500/C5400 makes reproducing your colour and monochrome documents a breeze. Plus with sophisticated device management features, you can control and track control users' access to colour and other device functions – helping keep your costs under control.

Automatic Colour Sensing Technology

Using inbuilt image sensing technology, ApeosPort-II C7500/C6500/C5400 automatically recognises colour on a page and will only charge you colour rates for the colour pages you produce.



Multiple-Up Copying

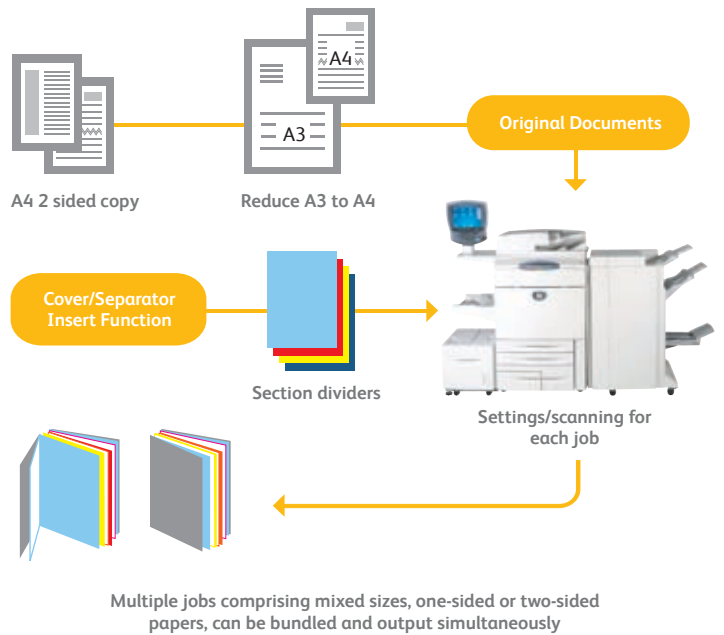
This cost saving feature conserves paper and toner by allowing users to copy/print multiple pages (up to 32 pages) on one sheet.

Media Identification and Auto Tray Switching

The intuitive DADF reduces manual handling by automatically identifying (and reproducing size for size) original documents being copied. ApeosPort also maintains productivity by automatically switching paper trays when the current tray is emptied.

Job Build

Merging and manipulating hardcopy documents made easy. This feature allows users to divide a copy job into numerous segments, apply unique settings to each, collate and print all segments thus eliminating the need for manual copying and collation (see diagram below).



Additional Copy Features

- Insert user defined annotations
- Watermark/Digital security watermark (optional)
- Covers insertion
- Poster creation



Print



Operating at speeds of 75/65/55 ipm in monochrome and 50/50/40 ipm in colour with true 2,400 x 2,400 dpi resolution, ApeosPort-II C7500/C6500/C5400 will allow you to produce documents of an outstanding quality whilst maintaining your office productivity.

Glossy Output

In addition to true 2,400 x 2,400 dpi resolution, this device is capable of producing glossy output finishes to truly enhance the look and feel of your documents. Plus, with output so rich in quality, in-house production of previously outsourced jobs becomes easier than ever.

Favourite Print Settings

Save time by storing the settings of frequently printed documents as favourites in your print driver. Settings include paper sizes, covers, duplexing, finishing and more.

Driverless Printing

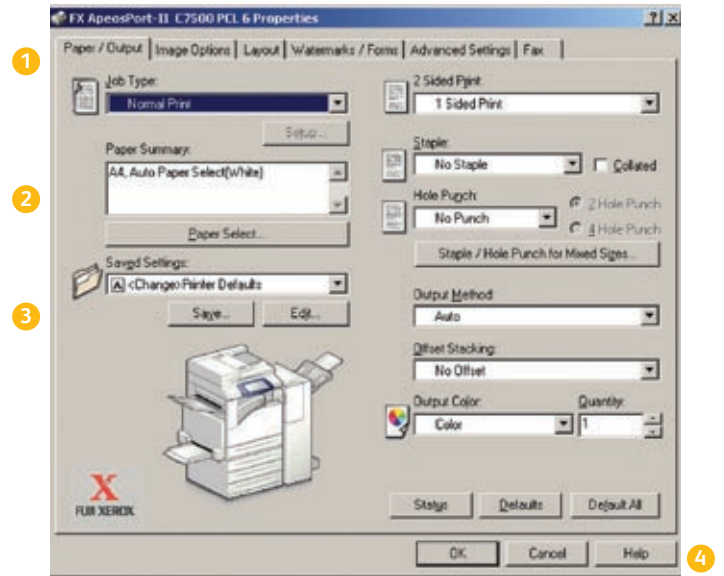
Conveniently, ApeosPort-II C7500/C6500/C5400 allows driverless printing of PDF, TIFF or PRN files from any network connected PC via the CentreWare Internet Services web utility. This is helpful for printing at remote locations without having to install print drivers.

Mailbox Print/Document Merge

Documents printed frequently by multiple users can be saved to a mailbox repository at the device for quick and easy retrieval on demand. Within an individual mailbox, multiple documents can also be merged to create one single document for print.

WHQL Certified Print Drivers

The intuitive WHQL certified PCL6 and PostScript print drivers are standard features on this device and enable easy integration with various industry standard operating systems.



An Adobe PostScript 3 print driver is also available if required

- 1 Drop down menu for secure print, mailbox print and more
- 2 Paper selection summary window
- 3 Favourite print settings
- 4 Help function for feature descriptions and driver assistance

Additional Print Features

- Secure print
- Delayed print
- Watermark/Digital security watermark (optional)
- Email print job confirmation

Scan



Device management

With a variety of intuitive features including colour scanning, the process of digitising and distribution of hardcopy documents is substantially simplified on the ApeosPort-II C7500/C6500/C5400. With colour scanning your digitised documents retain the characteristics as close as possible to the original hardcopy document.

Single Pass Monochrome Scanning

ApeosPort's Duplexing Automatic Document Feeder saves time and reduces the likelihood of paper jams by scanning both sides of a double-sided document simultaneously (in monochrome mode). This allows it to maintain the same productivity in both simplex and duplex modes.

Password Protect PDF Documents

Hardcopy documents scanned as PDF's can be password protected with restrictions imposed for opening, editing, selecting or printing the document.

Job Flow Sheets

This feature allows you to route scanned documents to multiple destinations, (see diagram below)

Browse Network Folders

This feature presents users with a hierarchical view of the entire network at the device through which they can navigate and select the destination for their scanned files. It helps eliminate the need to remember destination folder addresses for manual entry at the device.

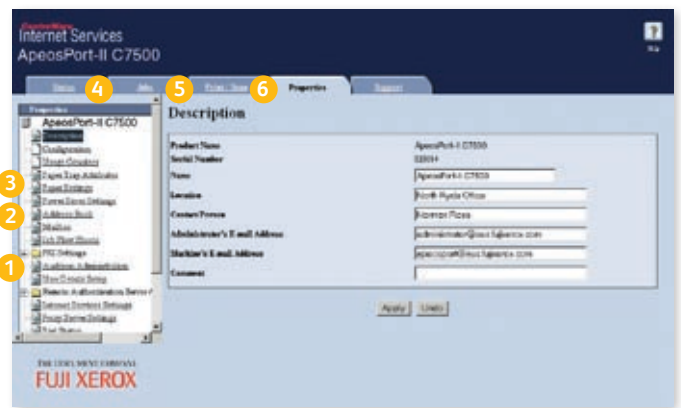
Additional Scan Features

- Restrict alterations to the scan to email "From" field
- Restrict access to addresses not listed in the local or mail server address books
- Online mailbox document retrieval to reduce mail server traffic

Control the costs associated with your ApeosPort-II C7500/C6500/C5400 and administer the device using the following management tools at no additional charge:

Xerox Standard Accounting - limit the quantity of print, copy, scan and fax jobs individual users can produce and track usage via CSV file.

CentreWare Internet Services - configure device settings, monitor usage/consumables, upload address books, enable Auditor and much more.



- 1 Configure auditron
- 2 Configure mailboxes
- 3 Upload email address books as csv files
- 4 Monitor paper tray/ consumables status
- 5 Monitor job queues
- 6 Submit driverless print jobs

Scanned Document



Extending your capabilities with Apeos Solutions

Apeos iiX (Apeos Internet Integration based on XML and SOAP) extends ApeosPort's capabilities beyond those of a regular multifunction device (MFD). Apeos iiX allows users to connect to various web applications and provides a suite of Software Development Kits for the seamless customisation and integration of all business applications with ApeosPort... making it a truly intelligent portal.

Applying these technologies to document intensive processes, enables greater productivity and efficiencies benefiting both the bottom line and the environment.

Apeos Image Gateway Solutions

Fuji Xerox has partnered with Nuance, Captaris and Bear Solutions, leading suppliers of document workflow, fax server and cost recovery technologies to co-develop a range of innovative solutions that will integrate with your ApeosPort devices to help streamline workflows, improve efficiencies and manage costs.

RightFax for Apeos

A fax server solution, RightFax for Apeos provides faxing capabilities without installing a fax board on your ApeosPort device. Faxes can be sent at the device or directly

from a user's PC. At the user interface, users are given the opportunity to attach a predefined cover sheet (that can be auto populated), specify a send time/date, request an emailed or printed job confirmation and more. Sent and received faxes can also be tracked using the web access utility at any network connected PC.

OmniPage for Apeos

This scanning solution will provide users with the extended ability to digitise hard copy documents as text only or text searchable PDF files. Documents can be de-skewed and/or rotated as required prior to distribution to an email address or network repository, reducing the business and environmental cost of hard copy distribution and archiving.

XCMS for Apeos

XCMS for Apeos is a comprehensive cost recovery solution that works with a range of swipe/proximity cards to capture usage data for all the copies, prints, scans and faxes produced by individual users on your fleet of ApeosPort devices enabling responsible paper use management and measurement.

Combining XCMS for Apeos with RightFax and OmniPage for Apeos extends its feature sets even further to include the powerful "My Prints" and "My Faxes" options from any enabled ApeosPort device on your organisation's LAN or WAN.



Specifications of ApeosPort-II C7500/C6500/C5400 Series



ITEMS SPECIFICATIONS

Output Speed - Printing and Copying

	ApeosPort-II C7500	ApeosPort-II C6500	ApeosPort-II C5400
A4 monochrome	75 ipm	65 ipm	55 ipm
A4 colour	50 ipm	50 ipm	40 ipm
A3 monochrome	37 ipm	33 ipm	28 ipm
A3 colour	25 ipm	25 ipm	20 ipm

Print Function

Processor	Power PC 750 600MHz
Memory	1024 MB
Hard Disk	80 GB
Interface	Standard: Ethernet 100Base-TX/10Base-T, Optional: USB 2.0
Printer Languages	PCL6, PCL5c, Postscript 3
Resolution	True 2,400 x 2,400 dpi
Operating Systems	Microsoft® Windows 2000, Microsoft® Windows XP, Microsoft® Windows Server 2003, Microsoft® Windows Vista, Mac OS 8.6 - Mac OS 9.2.2 English, Mac OS X 10.3.9 - 10.4.9 English

Copy Function

FCOT	4.1 seconds in Monochrome 7.8 seconds in Colour
Concurrency	Yes
Resolution	True 2,400 x 2,400 dpi

Scan Function

Input Speed	Colour: 50 ipm Monochrome: Up to 200 ipm*
Resolution	600/400/300/200 dpi
Maximum Scan Area	A3
Network Protocol (Network Scanning)	TCP/IP (Salutation, HTTP)
File Formats	Standard: TIFF, JPEG, PDF, DocuWorks Optional: High Compression PDF
Scan Workflows	Email, folder/server (via SMB/FTP protocol) and mailbox Job flow sheets etc.

Duplex Automatic Document Feeder

Capacity	250 sheets
Paper Sizes	A5 to A3
Paper Weights	38 to 200 gsm

Paper Trays 1 & 2

Capacity	500 sheets each
Paper Sizes	A5 to A3
Weights	64 to 176 gsm

Paper Tray 3

Capacity	870 sheets
Paper Sizes	A4
Weights	64 to 176 gsm

Paper Tray 4

Capacity	1,140 sheets
Paper Sizes	A4
Weights	64 to 176 gsm

Bypass Tray

Capacity	250 sheets
Paper Sizes	A5 to SRA3
Weights	64 to 280 gsm

High Capacity Feeder

Capacity	2,000 sheets
Paper Sizes	B5 to A4
Weights	64 to 176 gsm

Optional Accessories

C-Finisher: Stacker/Stapler/Puncher

Stacker Capacity	Up to 3,000 sheets
Stapler Capacity	50 sheets
Stapler Paper Sizes	B5 to A3
Staple Positions	Single (front and rear angled staple), Dual (parallel)

C-Finisher ++: Stacker/Stapler/Puncher/Booklet Maker

Stacker Capacity	Up to 1,500 sheets
Stapler Capacity	50 sheets
Stapler Paper Sizes	B5 to A3
Staple Positions	Single (front and rear angled staple), Dual (parallel)
Booklet Maker Paper Sizes	A4 to A3
Booklet Maker Paper Weights	15 sheets (at 90 gsm) OR 13 sheets (at 90 gsm) PLUS 1 cover sheet (at 90 to 176 gsm)

D-Finisher ++: Stacker/Stapler/Puncher/Interposer/Booklet Maker

Stacker Capacity	Up to 2,000 sheets
Stapler Capacity	100 sheets
Stapler Paper Sizes	B5 to A3
Staple Positions	Single (front and rear angled staple), Dual (parallel)
Booklet Maker Paper Sizes	A4 to A3
Booklet Maker Paper Weights	15 sheets (at 90 gsm) OR 13 sheets (at 90 gsm) PLUS 1 cover sheet (at 90 to 176 gsm)

Hole Puncher (standard with all finishers)

Puncher Paper Sizes	B5 to A3
Puncher Paper Weights	90 to 176 gsm
Number of Holes	Standard: 2 and 4 holes, Optional: 3 holes

Tri-Folder (optional with D Finisher ++)

Fold Types	C or Z folds
Paper Sizes	A4 to A3
Paper Weights	60 to 90 gsm

General

Electrical Requirements	240 V/50 Hz/10 A
Power Consumption	Sleep mode: 6.6 W Running: 2,200 W
Warm up	150 seconds or less
Dimensions	1,011 x 781 x 1,370 mm (W x D x H)
Weight	From 246 kgs

* Scanning A4 LEF double sided document at 200 dpi to a mailbox

Customer Expectation Document (CED)

For detailed product specifications, optimum performance parameters & service clearances refer to Product Customer Expectation Document.

Protecting the environment is a fundamental component of our company's commitment to corporate citizenship. At Fuji Xerox Australia, we supply products that have been designed with both our customers and the environment in mind. As a world leader in the development of parts and components Remanufacturing Programs, we have made Eco Manufacturing an integral part of our business. All our sites have achieved ISO 14001:2004 Environmental Management System Certification, as a demonstration of our commitment to protecting the environment.

Descriptions in this material, product specifications and/or appearances are subject to change without prior notice due to improvements. Please note that the product colour appears differently from the actual colour as a result of properties of papers or printing ink. Windows and Windows NT are registered trademarks of Microsoft Corporation. NetWare is a registered trademark of Novell, Inc. in the United States. Macintosh, Mac OS and Ether Talk are trademarks of Apple Computer, Inc. PostScript is a registered trademark of Adobe Systems Incorporated in each country. HP-GL is a registered trademark of Hewlett-Packard Company. Nuance, the Nuance logo and OmniPage are registered trademarks or trademarks of Nuance Communications, Inc. in the United States and other countries and are used here under license. RightFax, Alchemy and Captaris are registered trademarks or trademarks of Captaris Inc. and are used here under license. The XCMS logo is used with permission from BEAR Solutions (Australasia) Pty Ltd.

Spare for the standard configuration of installed machines is supported for up to 7 years from the date the manufacturer ceases manufacturing new machines



Reproduction Prohibitions Please note that the reproduction of the following is prohibited by law: domestic and overseas bank notes, government-issued securities, national bonds and local bond certificates; unused postage stamps and some post cards; certificate stamps; and copyright material (literary works, musical works, paintings, engraving, maps, cinematographic works, photographic works etc) except where and to the extent that the local law provides otherwise. This product is equipped with anti-counterfeit feature. This feature is not intended to prevent illegal reproduction.



For Your Safe Use

Before using the product, read the Instruction Manual carefully for proper use.
Use the product with an appropriate adequate power source and voltage displayed. Be sure to establish a ground.
In the case of a failure or short circuit, an electric shock may result.

For more information or detailed product specifications, call or visit us at

Fuji Xerox Australia 101 Waterloo Road,
Macquarie Park NSW 2113
Tel. (02) 9856 5000 Fax. (02) 9856 5003

www.fujixerox.com.au

