

## Epson® SureColor™ SC-S60600

- Produce durable outdoor signs and banners, window and back-lit displays, wallpaper and decor, vehicle wraps and POS, labels and more... AT HIGH SPEED
- Compatible with coated and uncoated paper, vinyl, canvas, film and synthetic stocks
- Superior imaging with reduced grain, an enhanced gamut, maximum contrast and gloss levels
- Supports tiling applications with exceptional colour precision, consistency and linearity
- Low running costs with reduced power consumption, ink consumption and maintenance
- Easy to operate with a see-through platen cover, remote management & status notification
- Fast job completion with an integrated Auto Take-Up, Auto Media Setup and Skew Correction
- Enhanced reliability with a Self Cleaning Printhead, Headguard, and Air Filtration system
- Suits installation in factory, shop and air-conditioned studio environments
- Cost effective operation with low maintenance, power and ink consumption
- High durability with flexible cover extendable up to FIVE YEARS

# Epson® SureColor™ SC-S60600

## Product Specifications

PRINTING TECHNOLOGY	
<b>Print Engine</b>	Self-cleaning DUAL PrecisionCore™ TFP with VSDT Epson Precision Dot Technology Integrated Headguard
<b>Media Handling</b>	Auto Media Setting, Auto Skew Correction, Advanced Auto Tension Control (Ad-ATC) & Auto TakeUp (ATU) Air Filtration System & Print Drying System
<b>Other</b>	
<b>Print Quality</b>	1440 x 1440 dpi Max Res, 4.2pl Min Drop Size
INK SYSTEM	
<b>Type</b>	Epson UltraChrome® GS3 Eco-Solvent
<b>Colour Set</b>	DUAL CMYK
<b>Loading</b>	8 x 700ml Cartridge
PRINT SPEEDS <sup>1</sup>	
<b>Draft</b>	95.3m <sup>2</sup> /h
<b>Billboard Production</b>	52.3m <sup>2</sup> /h
<b>Banner Production</b>	29.4m <sup>2</sup> /h
<b>Vinyl Production</b>	17.6m <sup>2</sup> /h
<b>Film Production</b>	6.8m <sup>2</sup> /h
MEDIA HANDLING	
<b>Sizing</b>	300-1626mm (64") wide, 1mm max thickness
<b>Input</b>	Single Roll, 45kg max weight, 250mm max diameter
<b>Output</b>	Sheet (manual cut) or roll (200mm max diameter)
<b>Drying</b>	Individually adjustable input, platen & output heaters
MANAGEMENT	
<b>Features</b>	See-through platen with LED lighting On-board 2.7" Colour LCD Panel Supplied with Epson Control Dashboard software Remote E-mail Status & Error Reporting Supports most major 3rd party RIP Applications

INTEGRATION	
<b>Space Requirements</b>	3.6 x 2.7 x 1.7m (WxDxH)
<b>Operational Temp</b>	15 to 35°C (20 to 32°C recommended)
<b>Operational Humidity</b>	20 to 80% (40 to 60% recommended)
<b>Power Requirement</b>	3x 240V, 50/60Hz, 5A
<b>Power Consumption</b>	745W Operating/ 13W Sleep
<b>Operational Noise</b>	60.5dB
<b>Connectivity</b>	USB2.0, 100BASE-TX/1000BASE-T
OPTIONS	
<b>1YWSCS60600</b>	1Yr CoverPlus On-Site Service Extension
<b>2YWSCS60600</b>	2Yr CoverPlus On-Site Service Extension
CONSUMABLES	
<b>C13T724100</b>	Maintenance Cleaning Kit
<b>C135210044</b>	Maintenance Parts Kit
<b>C13T699300</b>	Ink Cleaner
<b>C13T833192</b>	700ml Black Ink Cartridge
<b>C13T833292</b>	700ml Cyan Ink Cartridge
<b>C13T833392</b>	700ml Magenta Ink Cartridge
<b>C13T833492</b>	700ml Yellow Ink Cartridge
<b>C13T833092</b>	Cleaning Cartridge
CONFIGURATION OPTIONS	
<b>SCS606001YR</b>	Printer with 1Yr On-Site Warranty
<b>SCS606003YR</b>	Printer with 1Yr Wty & 2Yr On-Site CoverPlus
<b>SCS606005YR</b>	Printer with 1Yr Wty & 2 x 2Yr On-Site CoverPlus

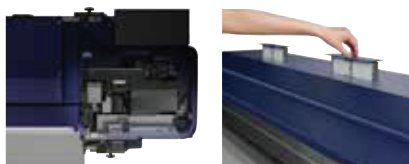
<sup>1</sup> Figures are maximum engine speeds only. They do not include provisions for image processing, transfer, drying or post production. Nominated speeds may not be suitable for all media types and/or applications. Alternate print modes may be employed by RIP s/w for different results.



The included Print Drying System integrates with the printer to enable production at high speed and with heavy ink loads



The Ad-ATC and ATU enable roll-to-roll production with superior linearity, parallelism, and tension for off-line processing and tiling applications



The Auto Head Cleaning & Air Filtration systems work in conjunction with the Headguard to ensure superior reliability with reduced maintenance



The printer can be managed through the Control panel or via Epson Control Dashboard s/w complete with e-mail status & error notifications

For more information or detailed product specifications, call us at

**Fuji Xerox Australia Pty Ltd.** ABN 63 000 341 819.  
Australian Head Office: 101 Waterloo Rd, Macquarie Park NSW 2113.  
Phone (02) 9856 5000 Fax (02) 9856 5003

13 14 12

[www.fujixerox.com.au](http://www.fujixerox.com.au)

**FUJI XEROX** 