



## Epson® SureColor™ SC-S80600

- Produce durable outdoor signs and banners, window and back-lit displays, wallpaper and decor, vehicle wraps and POS, labels and more... with MAXIMUM COLOUR and optional WHITE OR METAL
- Compatible with coated and uncoated paper, vinyl, canvas, film and synthetic stocks
- Superior imaging with reduced grain, an enhanced gamut, maximum contrast and gloss levels
- Supports tiling applications with exceptional colour precision, consistency and linearity
- Low running costs with reduced power consumption, ink consumption and maintenance
- Easy to operate with a see-through platen cover, remote management & status notification
- Fast job completion with an integrated Auto Take-Up, Auto Media Setup and Skew Correction
- Enhanced reliability with a Self Cleaning Printhead, Headguard, and Air Filtration system
- Suits installation in factory, shop and air-conditioned studio environments
- Cost effective operation with low maintenance, power and ink consumption
- High durability with flexible cover extendable up to FIVE YEARS

# Epson® SureColor™ SC-S80600

## Product Specifications

PRINTING TECHNOLOGY	
Print Engine	Self-cleaning DUAL PrecisionCore™ TFP with VSDT Epson Precision Dot Technology Integrated Headguard
Media Handling	Auto Media Setting, Auto Skew Correction, Advanced Auto Tension Control (Ad-ATC) & Auto TakeUp (ATU) Air Filtration System & Print Drying System
Other	
Print Quality	1440 x 1440 dpi Max Res, 4.2pl Min Drop Size
INK SYSTEM	
Type	Epson UltraChrome® GS3 Eco-Solvent
Colour Set	C,M,Y,K,Lc,Lm,Lk,Or,Rd + (opt.) White or Metal
Loading	9 x 700ml Clr + (opt.) 600ml Wht or 350ml Mtl Carts
PRINT SPEEDS <sup>1</sup>	
9c Draft	95.3m <sup>2</sup> /h
9c Billboard	52.3m <sup>2</sup> /h
9c Banner	29.4m <sup>2</sup> /h
9c Vinyl, Canvas & Paper	17.6m <sup>2</sup> /h
9c Film (Front & Backlit)	6.8m <sup>2</sup> /h
MEDIA HANDLING	
Sizing	300-1626mm (64") wide, 1mm max thickness
Input	Single Roll, 45kg max weight, 250mm max diameter
Output	Sheet (manual cut) or roll (200mm max diameter)
Drying	Individually adjustable input, platen & output heaters
MANAGEMENT	
Features	See-through platen with LED lighting On-board 2.7" Colour LCD Panel Supplied with Epson Control Dashboard software Remote E-mail Status & Error Reporting Supports most major 3rd party RIP Applications

INTEGRATION	
Space Requirements	3.6 x 2.7 x 1.7m (WxDxH)
Operational Temp	15 to 35°C (20 to 32°C recommended)
Operational Humidity	20 to 80% (40 to 60% recommended)
Power Requirement	3x 240V, 50/60Hz, 5A
Power Consumption	650W Operating/ 14W Sleep
Operational Noise	60.5dB
Connectivity	USB2.0, 100BASE-TX/1000BASE-T
OPTIONS	
1YWSCS80600	1Yr CoverPlus On-Site Service Extension
2YWSCS80600	2Yr CoverPlus On-Site Service Extension
CONSUMABLES	
C13T724100	Maintenance Cleaning Kit
C135210044	Maintenance Parts Kit
C13T699300	Ink Cleaner
C13T833192~992	700ml Colour Ink Cartridges
C13T833A92	600ml White Ink Cartridge
C13T833B92	350ml Metal Ink Cartridge
C13T833092	Cleaning Cartridge
CONFIGURATION OPTIONS	
SCS806001YR	Printer with 1Yr On-Site Warranty
SCS806003YR	Printer with 1Yr Wty & 2Yr On-Site CoverPlus
SCS806005YR	Printer with 1Yr Wty & 2 x 2Yr On-Site CoverPlus

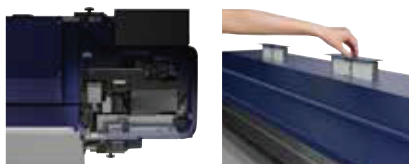
<sup>1</sup> Figures are maximum engine speeds only. They do not include provisions for image processing, transfer, drying or post production. Nominated speeds may not be suitable for all media types and/or applications. Alternate print modes may be employed by RIP s/w for different results.



An optional Print Drying System integrates with the printer for production at high speed &/or with heavy ink loads (recommended for White & Metal work)



The Ad-ATC and ATU enable roll-to-roll production with superior linearity, parallelism, and tension for off-line processing and tiling applications



The Auto Head Cleaning & Air Filtration systems work in conjunction with the Headguard to ensure superior reliability with reduced maintenance



The printer can be managed through the Control panel or via Epson Control Dashboard s/w complete with e-mail status & error notifications

For more information or detailed product specifications, call us at

**Fuji Xerox Australia Pty Ltd.** ABN 63 000 341 819.

Australian Head Office: 101 Waterloo Rd, Macquarie Park NSW 2113.

Phone (02) 9856 5000 Fax (02) 9856 5003

13 14 12

[www.fujixerox.com.au](http://www.fujixerox.com.au)

**FUJI xerox** 